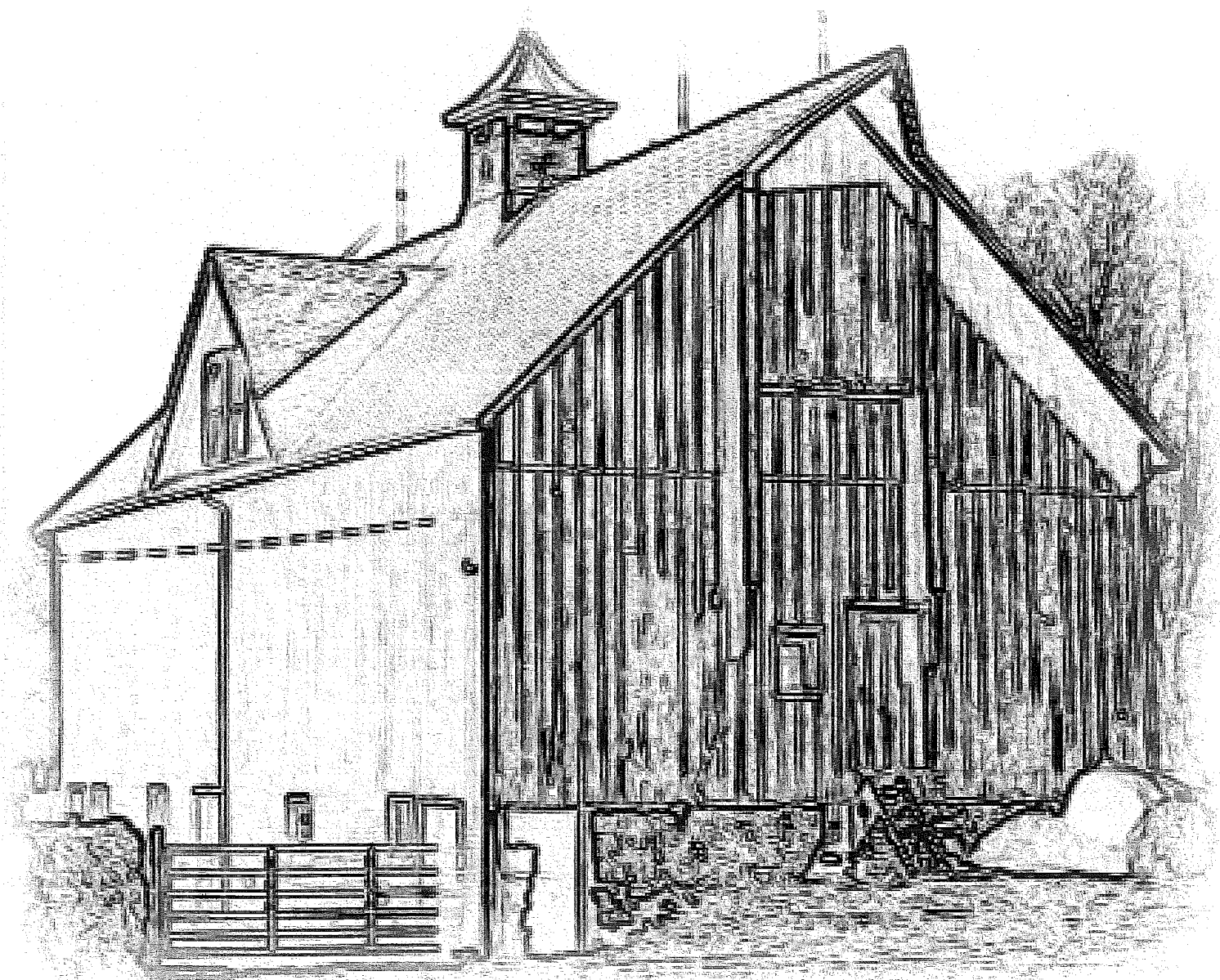




The Blue Earth County **Historian**

A publication of the Blue Earth County Historical Society

Spring 2005



In this issue:

Century Farms in Blue Earth County

The Blue Earth County Historian
Spring 2005

The Blue Earth County Historian is published quarterly for the members of Blue Earth County Historical Society. BECHS has the mission of collecting, preserving and publishing material relating to the history of Blue Earth County.

Board of Trustees

Dan Zielske President
Theresa McLaughlin Vice President
Bernadette Wilson Treasurer
Dana Niu Secretary

At Large Members

Vail Belgard	Mike Frederick
Ron Gower	Barb Lamson
Mary McComb	Jack Madsen
Leslie Peterson	Henry Quade
John Rezmerski	Todd Stromswold
Jane Tarjeson	- Rapidan Heritage Society

Staff

	Executive Director
Jessica Potter	Collections Manager
Shelley Harrison	Archivist
Elizabeth Johnson	Museum Aide
LaDonna Tollefson	Achives Aide
Larry Haring	Custodian

Copyright: *Historian* copyright 2005 by the Blue Earth County Historical Society. All rights reserved. Reproduction of any material from this issue expressly forbidden without permission of the publisher.

Please contact us at: 507-345-5566 or by e-mail at:

General Office bechs@juno.com
Jessica Potter: bechs-collections@juno.com
Shelley Harrison: bechs-research@juno.com
Elizabeth Johnson bechs-museumstore@juno.com

Blue Earth County Historical Society
415 Cherry Street
Mankato, MN 56001
<http://www.rootsweb.com/~mnbechs/>



**Report from the
Board President**

This year's annual meeting was held at Old Main Village. We were treated to a wonderful meal and lecture in the large hall with its wonderful memories and historic architecture. Our speaker for the evening was Dr. Joseph A. Amato from Southwest Minnesota State University in Marshall, Minnesota. In his talk he spoke of the settlement patterns of rural southern Minnesota, noting that some immigrant populations were more akin to holding on to the land. These stable family economic units then provided for the growth of industry and business of their hometowns. These families still have control over much of the local economy.

Thank you to the staff for doing a wonderful job in organizing the events for the evening. Also a big thank you goes out to Joe Kubicek and Tom Hagen for their six years of service on BECHS Board of Trustees. We welcome Mary McComb, Henry Quade, Leslie McPhail Peterson, and Todd Stromswold to the new BECHS Board of Trustees.

Notably absent from the proceeding was BECHS Executive Director, James Lundgren. James has recently accepted a new position with the National Eagle Center. James first came to BECHS five years ago. During this time he was responsible for bringing our museum up to the accepted museum standards as practiced throughout the United States. He gave us a new professional look. James ran a very tight ship and was able to reduce BECHS operating expenses by a good amount. He was also a wonderful help in fundraising, he helped start the BECHS Development and Marketing Committee, which oversees our financial future. Best wishes to James and his wife, Molly, in their new jobs and future.

Dan Zielske

**The Blue Earth County Historical Society's Heritage Center Gallery,
Museum Store and Research Center are open**
Tuesday 10:00 to 12:00, 1:00 to 4:00 and 5:00 to 8:00
Wednesday through Saturday from 10:00 to 12:00 and 1:00 to 4:00



A Farewell Message from James Lundgren

For those of you that have not already heard, I have left the Blue Earth County Historical Society. My wife accepted a position with the city of Wabasha and we have moved to southeastern Minnesota. It is with very mixed feelings that I depart Blue Earth County. While a new position is exciting, we are sad to leave behind so many wonderful people that have made this Society one of the best in the state.

My personal philosophy has always been to leave every organization better than I found it. It has been very satisfying to see the progress made at BECHS over the last five years. The most significant progress has been made in the research center and with the reorganization of the collections storage room. Through these continuing efforts we are able to create better exhibits, more quickly and thoroughly answer research questions, and most importantly, fulfill the mission of preserving the history of Blue Earth County for the present and future generations.

The success of this Society is the result of the hard work of many people. I do not have the space to list everyone, and I do not wish to offend those whose efforts are worthy of mention, so I will simply say Thank You to everyone for your dedication to the Society.

Visit us on our website 

<http://www.rootsweb.com/~mnbechs/>

Have you visited our site recently? We continue to add new and interesting information. Check out the History link and the month of April for some "Tidbits in Time." Or, check out the indexes. The pages are all searchable from the main page.

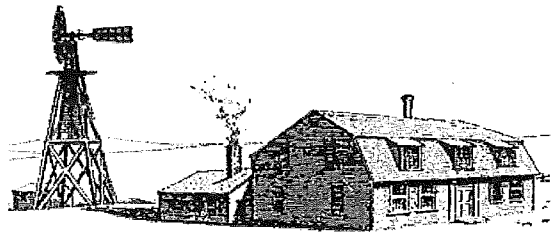
Creating, maintaining and updating a web site takes time and effort. Interested in helping us prepare or gather materials for the site? Do you have web page skills or are you interested in learning them and assisting with the page? Any comments, ideas or suggestions? Contact Donna at sng3@mnsu.edu

EXHIBIT UPDATE

Blue Earth County Church History
Pictorial hallway display continues

HickoryTech: A Centennial Business
Explore a timeline of communication history
on display through May

Opening April 25th
7:00 p.m.
BECHS Heritage Center Gallery



Down on the Farm

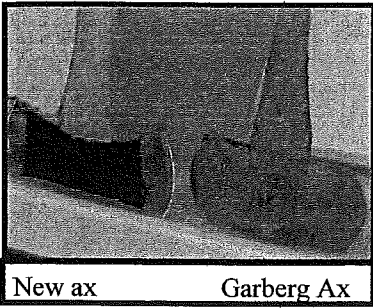
**The Agricultural Story of
Blue Earth County**

Solve a puzzle, find an answer!

Interested in researching your house, your town, your church, your family or just any subject that you find intriguing? Come join us at the first meeting of the Fingerprints & Footnotes Club.

May 12, 2005, 6-8 pm
BECHS Research Room

Hear a brief talk on identifying those mystery pictures in your boxes and albums. A discussion period will follow allowing time to ask questions, get advice on doing any research and to share success stories that might help others with their research



the original "eighty."

One of the mementoes I purchased at their auction is a double-bitted ax, worn nearly to the handle from use and sharpening. Only one who has used such an ax can appreciate

how much sweat and effort that symbolizes!

To visit another Century Farm for this article I had only to drive up the west hill of our valley known as Dane Bottom and visit Melvin and Bonita Bartsch. They live on the original 160-acre site which Gottlieb Bartsch



and his wife Anna purchased in 1884. In fact, they live in the same house (with some additions) in which Gottlieb and Anna raised eleven children. Melvin and Bonita bought the farm from their uncle, Reinhold, in 1959 and raised seven children of their own there. They are retired now, but they still have a couple of horses and a few steers. They hope the next generation will take their place and continue the family tradition on into the next century.

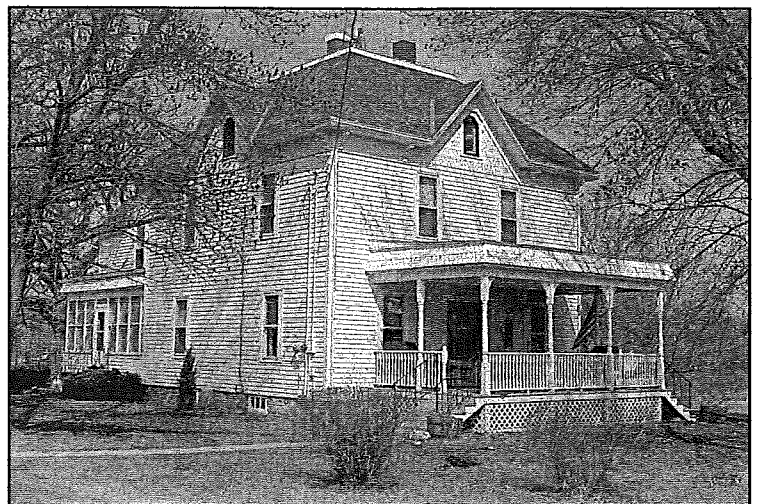
Some Century Farms are still being operated full swing by direct descendants of the original homesteaders, although things are very different now. In the past a farmer was defined as a man out standing in his field. Today it can be a man or a woman, and he or she might just be out -standing by a huge hog operation. Such is the case with the Strobel Century Farm. Greg Strobel was a schoolmate to our kids back when there was still a Mapleton High School. He and his wife Robin are the sixth generation of their family to operate what is now Strobel Farm Properties.



It all began back in 1856 when George Ott and his wife bought the original acreage two miles east of Mankato for four dollars an acre. At the time it was all trees, some of which George cut to make a log cabin. The Ott Log Cabin still stands today, and is on display at Sibley Park. Greg thinks theirs is probably one of the oldest continuously operating farms in the state.

By turns the property passed to George's daughter, Barbara, and on through succeeding generations until with various additions, it passed to Greg's father, Claire, and his wife, Janet. Nothing remains of the original building site, and the size of the operation has grown to something over 2,000 acres, most of which is used to raise crops to supply a huge hog operation. No more planting crops between the stumps and selling maple syrup to make a living!

Randy Will and his wife, Ramona, represent another multi-generation Century Farm operation here in Blue Earth County. Randy, another schoolmate to our kids at Mapleton High, tells the story of David Will, who immigrated from Scotland, homesteading first in Waukesha County, Wisconsin. After marrying Elizabeth Melville in 1859, he began exploring other farming opportunities. Randy tells me that David walked all the way from Wisconsin to select the property in Medo Township near Mapleton, and then



Century Farms in Blue Earth County

by Jack Madsen

When I was asked if I would do an article on century farm our newsletter, I readily agreed. After all, I have personal experience in the matter. No place is more dear to me than our own century farm. Besides, I have the added advantage of having lived a rather large part of the previous century right here on the "home place."

The Century Farm program began back 1958 when Minnesota was focusing on its Centennial. The Minnesota State Fair organization teamed up with the *Minneapolis Star and Tribune* to accent the contribution of family farms to the development and economy of Minnesota. Those who could prove continuous family ownership of their farms since the time of statehood would receive the designation of Century Farm.

Today the program is promoted by the Minnesota State Fair and the Minnesota Farm Bureau. Families must now be able to prove continuous ownership for 100 years, though obviously not dating back to 1858. To date there are over 8,000 farms that have qualified for the distinction. In fact, with the latest additions as of June, 2004, there are 178 Century Farms in Blue Earth County alone.

As I looked through *Century Farms of Minnesota* and *The Heritage of Blue Earth County* and saw pages and pages of individuals and family portraits, some of people I have known all my life, all with their own story to tell, I could see I would not be able to tell everyone's story. So, with all due apologies, I have limited myself to writing about those Century Farms with which I am most familiar, starting briefly with our own.

My memory is full of the stories of how my dad's uncle Mads arrived here from Denmark in the late 1800's and carved out his homestead by main strength. He cleared the land, cutting the trees by hand and grubbing the stumps with a team of horses and a "stump puller."

Back then farms had to have names, so Mads named his place "SyIvelin Farm" in tribute to his brother Karl's small ship that plied the rugged waters of the North Sea. That anyone could own 120 acres - or even much more - was astounding to the folks back in Denmark.

Uncle Mads and his wife Maria were family celebrities.

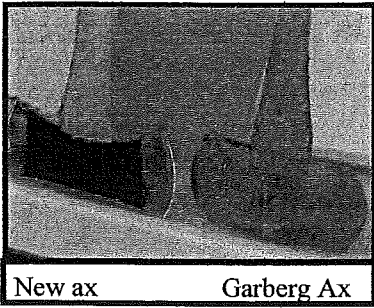
But they were also childless. So, in the latter years of their lives, Mads and "Maggie" made one final trip back to Denmark to visit the family they would probably never see again, and to select some young man in the family who would return with them to help run Sylvelin Farm and perhaps eventually come to own it. Shortly before they were to return to America, Uncle Mads had to choose between my dad and one of his cousins. I'm glad he chose my dad.

In the early forties Sylvelin Farm passed to my parents, Thorsten and Lois Madsen, but it did not become a registered Century Farm until the summer of 2003.

The first Century Farm I am familiar with belonged to the Tronvold sisters, the twins, Helen and Eleanor. They had inherited the family farm from their grandfather, Tølløv Garberg, who had homesteaded it in Rapidan Township in the mid 1860s. Not only was Helen my first and second-grade teacher at Rapidan back in the early forties, but both she and Eleanor had gone to school there with my mother and her siblings. They were friends of the family. In late years after my father died, I would bring our letters from Denmark for Eleanor to translate. The two of them would tell and re-tell the stories of those early years of homesteading.

One evening Helen told me how when Tølløv was working at a logging camp up north, an Indian who had heard of his medical skills came to the camp with a dislocated shoulder. Tølløv knew exactly how to handle such things and set it back in place. According to her story, the Indian was so gratified that he gave Tølløv his moccasins and wampum belt. It sounded like an interesting story, but then she got up from her chair and went into the next room and brought back the wampum belt and showed it to me. It was quite small and made of tiny beads dyed a pale blue.

Sad to say, it has disappeared. No trace of it could be found after the recent death of both of the twins. But there are many other keepsakes to remind me of them, their parents, and grandparents. In 2003 they financed the restoration of the original Garberg log cabin, now on display at the Blue Earth County Fairgrounds. Within the cabin one can see the ox yoke, still intact, that Grandpa Garberg used to harness a miss-matched team of oxen he used to break ground for planting on



the original "eighty."

One of the mementoes I purchased at their auction is a double-bitted ax, worn nearly to the handle from use and sharpening. Only one who has used such an ax can appreciate

how much sweat and effort that symbolizes!

To visit another Century Farm for this article I had only to drive up the west hill of our valley known as Dane Bottom and visit Melvin and Bonita Bartsch. They live on the original 160-acre site which Gottlieb Bartsch



and his wife Anna purchased in 1884. In fact, they live in the same house (with some additions) in which Gottlieb and Anna raised eleven children. Melvin and Bonita bought the farm from their uncle, Reinhold, in 1959 and raised seven children of their own there. They are retired now, but they still have a couple of horses and a few steers. They hope the next generation will take their place and continue the family tradition on into the next century.

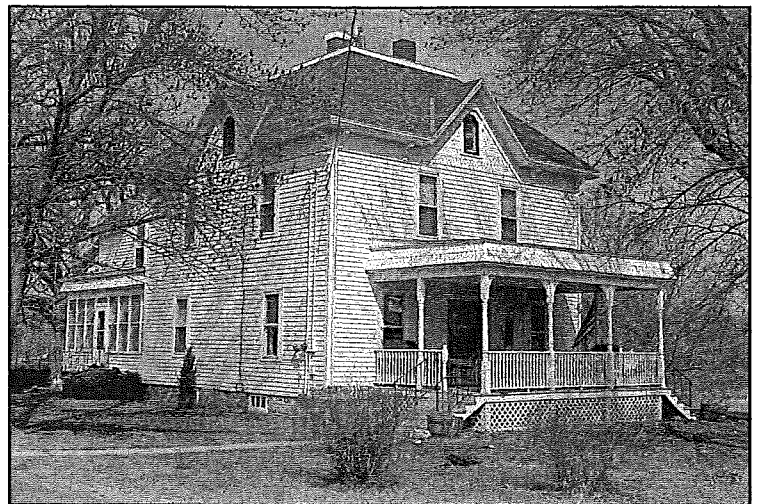
Some Century Farms are still being operated full swing by direct descendants of the original homesteaders, although things are very different now. In the past a farmer was defined as a man out standing in his field. Today it can be a man or a woman, and he or she might just be out -standing by a huge hog operation. Such is the case with the Strobel Century Farm. Greg Strobel was a schoolmate to our kids back when there was still a Mapleton High School. He and his wife Robin are the sixth generation of their family to operate what is now Strobel Farm Properties.



It all began back in 1856 when George Ott and his wife bought the original acreage two miles east of Mankato for four dollars an acre. At the time it was all trees, some of which George cut to make a log cabin. The Ott Log Cabin still stands today, and is on display at Sibley Park. Greg thinks theirs is probably one of the oldest continuously operating farms in the state.

By turns the property passed to George's daughter, Barbara, and on through succeeding generations until with various additions, it passed to Greg's father, Claire, and his wife, Janet. Nothing remains of the original building site, and the size of the operation has grown to something over 2,000 acres, most of which is used to raise crops to supply a huge hog operation. No more planting crops between the stumps and selling maple syrup to make a living!

Randy Will and his wife, Ramona, represent another multi-generation Century Farm operation here in Blue Earth County. Randy, another schoolmate to our kids at Mapleton High, tells the story of David Will, who immigrated from Scotland, homesteading first in Waukesha County, Wisconsin. After marrying Elizabeth Melville in 1859, he began exploring other farming opportunities. Randy tells me that David walked all the way from Wisconsin to select the property in Medo Township near Mapleton, and then



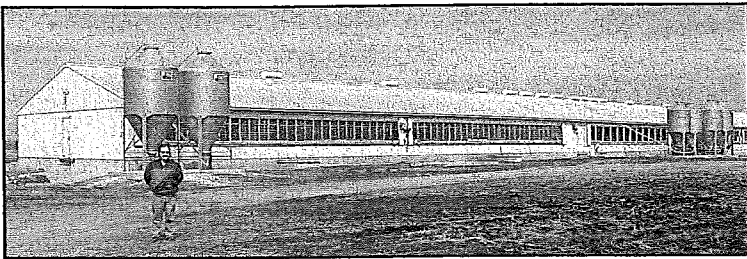
back to get his wife. Together they acquired 365 acres and raised a family of eleven children.

The original farm site now belongs to Randy and Ramona, although another member of the family lives there. Randy drove me over to show me the place. The house, recently re-shingled, is huge and magnificent! I guess with eleven children, "huge" was necessary. It stands surrounded by centuries-old oaks, bright and shining in the sunshine of a new century. The Cobb River, not much bigger than a creek just to the east, trickles along its way as it always has. What a treasure!

Randy and his wife, Ramona, are steeped in family and traditions. He showed me a large picture of the children of David and Elizabeth Will, all in a line in their later years. "Here you see ten brothers," he said, "and every one of them had a sister."

Grandfather Will began the tradition of singing Scottish songs at the annual Burns Festival in Mapleton. Since then a member of the Will family has sung at every Burns Night for over a hundred years. Randy's father, Jack Will, specialized in Harry Lauder selections, sometimes gleaned without the benefit of sheet music from old Edison records. Today the tradition continues with Randy's wife, Ramona, and their daughter. Randy has only missed one Burns Night in his entire life.

In addition to farming a large acreage, Randy also has a large hog operation. Ramona tells him it's his part-time job. He has to shower and change his clothes each time



he enters the building, and then shower and change back when he leaves. Otherwise she probably wouldn't let him back in their house

How long will it all continue? It's hard to tell. Where once large families survived on small farms, present farming conditions now require acreages that would

have boggled the mind of a Gottlieb Bartsch, a George Ott, or a David Will. The question of who will take over the family operation in the future looms like a cloud on the horizon of every Century Farmer. Who will be the one to carry it forward? But one has only to visit the treasured sites of some of those humble beginnings to realize, "What a grand tradition it was!"

Sources:

Century Farms in Minnesota, Dorothy L. Wanless, editor, 1986
Heritage of Blue Earth County, Julie Schrader, 1990

Interview: Melvin and Bonita Bartsch

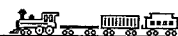
Interview: Greg and Robin Strobel

Interview: Randy and Ramona Will

Photographs by Jack Madsen

Century Farms in Blue Earth County

Altenburg, Michael W.; Anderson, Earl T.; Anderson, Lester; Attenberger, Ronald; Bach, John & Roman; Barott, Lawrence G. & Lois O.; Bartsch, Melvin G. & Bonita; Bergemann, Luverne W.; Beschnett, Renata; Bethke, Wilmar; Beyer, Norbert V. & Gladys; Beyer, Robert; Birr, Walter L. & Louise P.; Bjornson, Curtis S. & Betty M.; Bloede, Ruth; Bluhm, Nancy A. & Gerald Doering; Boeck, Rodney & Janet; Boehland, Edward & Lillian D; Borchardt, Ivan & Donna; Borgmeier, Roger; Borkenhagen, Marvin & Dorothy; Borneke, Donald F.; Bowen, Deopere; Lloyd Farm; Bowles, Thomas A.; Buelow, Grace & Sons; Bunde, Eunice; Caven, William & Eleanor; Christensen, Russell & Stasia; Conrad, Ronald & Judith; Cords, Delmar & Marion; Cramer, Charles G.; Crane, Loren C. & Ruth; Cumming, Loren & Sylvia; Cumming Dunn; Cumiskey, Bernita Barney; Dahltorp, Ronald & LaVonne; Daschner, Martin & Mabel; Dauk, Charles & Lucille; Davis, Richard; Davis, Willard W.; Denn, Bertram H. & Hildegard M.; Dethloff, Richard & Lois; Dewitz, Otto & Mary; Doedding, Darlene & Cornelia; Doedding Ingham; Doering, Carl C.; Drummer, Harold & Luanne; Edwards, Ben; Erdman, Evelyn Beyer; Erdman, Evelyn R.; Erlandson Brothers; Evans, Paul A.; Fasnacht, Nicolas & Lula; Fellows, Archie; Fitzsimmons, L.A.; Foster, George; Frederick, Cletus A. & Valeria; Goodrich, Merlin & Elmay; Greeley, Dolores; Guentzel, Norman & Marjorie; Hamilton, Thomas; Hanel, Herbert & Leona; Hansen, Harland & Judith; Helleksen, Harland S.; Herzberg, Helbert & Edith; Hodapp, Dennis & Charlotte; Hoehn, William & JoAnn; Hohenstein, Lyle; Hood, Verne & Donna; Hultengren, Alvina & Sharon Schaller; Jaeger, Alvin & Joan; Jaeger, Marvin; Jones, Donald; Jones, Harold C.; Jones, Lloyd T. & Vivian A.; Jones, Lyle E.; Kain, Frederick; Keller, Elroy; Ketzer, Lois; Kietzer, Norman; Knutson, Elsie & Marlin; Kraus, Herbert H.;



Kuznia, Joe and Rita; Laingen, Richard & Ellen; Lang, Jerome & Kristine; Langworthy, George; Larvick, Steven & Darcy; Lau, Marvin & Delores; Lentz, Roger; Lewis, Alvin H. & Elvina R.; Lewis, Lyle; Lewis, Morris M. & Sara L. Jones; Lindeland, Benerth G.; Lowell B. & Elnore M.; Luhring, Oliver H.; Madsen, Timothy & Liz; Malvin, Park S. and Vilma; Marble, Harlan L.; Mathews, James E.; May, Jack & Lisa; McCarthy, Virginia; McMahan, Rodney & Vera; Mertesdorf, Elverne R.; Meyer, Angeline & Margaret Kuiken; Mock, Barbara; Morse, Leslie; Nienow, Richard & Patricia; Oberle, Richard R.; Olson, Donald & Nyleen; Overlie Brothers; Owens, Harold and Dolly; Owens, John, Virginia & William; Paap, Donald A. & Sherry E.; Pahl, Lyle & Thelma; Parks, Alice W.; Pautsch Family Farm; Pederson, Benny G. & Nona; Pemble, C.W.; Phillips, Harold & Vera; Pick, Jeanette & Irvin; Prange, Milton C.; Preston, Delmar; C.; Prill, Dan, David, Mildred, & Gladys (Quint); Proehl, Arno & Florence; Proehl, Terry & Carleen; Rabenhorst, Edgar J.; Rasmussen, Gordon S.; Reedstrom, Frank G.; Schneeberger, Raymond & Marilyn; Schostag, Kenneth & Evelyn; Schubbe, Roland & Irmgar; Schull, Lawrence & Celestine; Schulz, Violet L.; Schuster, Arnold W.; Schwarz, Maynard & Norma; Sellers, Gary; Severson, Carlyn O.; Shanahan, George; Sharp, Everett B.; Sharp, James; Shouts, Stanley & Lavonne; Sohre, Dennis & Myra; Sonnabend, Dean & Tammy; Speck, Edna & Curtis; Stanke, Marvel E. & Janice; Starkweather, Duane & Dee Dee; Strand, Harley & Arlys; Strand, Vivian I.; Strobel, Claire J. Janet H., & Children; Sumner, R. & Cleo Sowers; Teigum, Albert T.; Thissen, Catherine & Patrick; Thomas, Harold; Tronvold, Helen; Ulrich, Wayne A.; Urban, Melvin E.; Vandrey, Albert E.; Vaubel, Clarence & John; Voigtlander, Willard; Walent, Jean Ann (Thomas); Walser, Henry; Ward, Darwin J. & Berneda C.; Ward, Elwood & Marlene; Ward, Ira & Mary Etta; Ward, Jack & Nedra; Ward, Willis & Rozella; Weber, June E.; Wendlandt, Bill; Wenner, Frank & Rosemary C.; Westphal, Bernard & Margie; Wiederhoeft, Kermit & Dolores; Wilder, Arvid & Charlotte; Will, Jack; Williams, H. Burton & LaVern; Williams, Kent & Debra; Williams, Roger J.; Wishart, Harold; Wolfe, Edna L.; Woods, D.E.; Yaeger, Glenn & Orene; Ziegler, Kenneth & Joan

Rapidan Heritage Society

Year 2004 was a busy, busy, busy year for RHS. The year started out with continued planning of the Rapidan Area Sesquicentennial, programs, agenda, advertising and most important, fundraising.

We are quite fortunate to have artist Marian Anderson as a Rapidan area resident. Along with community help on history and photos, Marian was able to create a great print for RHS. This is our major fundraising project, many thanks to Marian and Vince for their contribution. The print, which is called "Passage of Time," is a collage of past and present buildings and memories of the Rapidan Area. Limited and open edition prints are available through RHS. All proceeds from the print are designated for the restoration of Rapidan's Depot Museum. After the Memorial Day Service in Rapidan Park, the print was unveiled and Marian was on hand for a signing. We had a very large turnout.

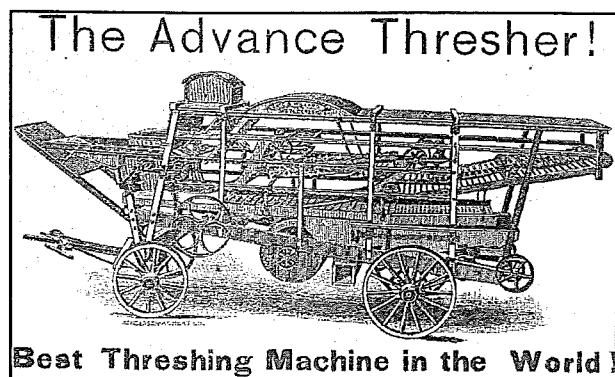
Other fundraisers are the sales of t-shirts, books, CD's and Red Wing pottery. RHS will be doing a series of Red Wing Pottery collectables in numbered limited editions. This year it was a cream can with "Rapidan Area Sesquicentennial 1854-2004 150 Years" on it. In 2005 it will be a shoulder jug bank, with a picture of the old bank on it. It's a great time to start a collection.

February RHS hosted the First Annual Valentine Horse Drawn Sleigh Ride with a bonfire and refreshments.

Timothy Madsen, an area resident and member, was appointed RHS's official photographer. He has created an awesome print of our first sleigh ride. This print will be available through RHS in 2005 and is titled "The Sleigh Ride."

Rapidan Heritage Society is officially a charitable organization, as we have finally received our 501(c) (3) non-profit status from the I.R.S.

Also this year, Jane Tarjeson and Joel Brude have started to collect and record our history from those who live and have lived in the Rapidan area and graduated



from Rapidan High School. If you have pictures, memorabilia, memories or comments you wish to contribute, let us know. Remember, even recent items and memories will be part of our history

This last summer RHS was in three area parades, we pulled an old railroad baggage wagon with a garden tractor train. The float carried candy throwers and banners advertising our September 11th 150-year celebration.

In May work started on the depot, donated new windows and the rest of the siding were installed. Caulking and painting was done by volunteer teens from S.C.T.C. New wood shingles were installed on the roof and a new staircase and handicap ramp put in. The ramp was built with volunteer help from the Lake Crystal Boy Scouts. Exterior work on the depot was completed just before the big celebration, many thanks to all who donated time and money for this phase of the project. Interior work starts Spring of 2005.

In June Wells Fargo presented RHS with a full size replica of a Wells Fargo Express sign. This sign now hangs in the same location on the depot as the original did in the early 1900's. Thanks to Wells Fargo!

Then there was September 11th, 2004 - our 150th year celebration. We were blessed with perfect weather for a show that included a stationary parade - threshing bee - programs in the park - hog roast - fireworks (that rivaled the bigger city's) and concluded with the Fire Department's dance. We had many comments on a job well done and the wish for an annual event.

A special thanks to Rapidan Township, private individuals and local businesses that monetarily supported this endeavor. Also a hearty thanks to all volunteers who helped organize, plan and work this celebration on the very limited time schedule of ten months.

As you can see, RHS had a very productive year, and because of all this activity we were unable to schedule our annual bus excursion; but look for one in 2005!

Daryl Lachmiller
President



Hubbard House **Tour Guides/Volunteers Needed**

We have lots of great programs planned for the Hubbard House this year. As a result, we are in need of many volunteers to serve as guides and helpers at these programs and on the weekends.

Can you help? We can use helpers at all levels of experience from crowd watchers to knowledgeable tour guides.

Contact Jessica at 507-345-5566

Tidbits in History, 1900

An early 50 mile race was won by an electric car in over 2 hrs on April 15, 1900.

Our President was William McKinley, there was no Vice President.

Prices

Bread: \$.03/loaf
Milk: \$0.30 /gal
Car: \$500
House: \$4,000
Stamp: \$0.02/ea
Average Income: \$637/yr
DOW Average: 71

Hot New Toys:

Ouija Boards, Tiddledy Winks

Top Songs

Strike Up the Band, A Bird in a Gilded Cage

January - March 2005 Donations

Anonymous Donor: Scrapbook 1951 Mankato/North Mankato flood, Photos (77) Mankato then and now

BECHS Purchase: Chairs (4)

Belgard, Hugh: Apron Fair Centennial 1959

Bergemann, Yvonne: Glass Plate negatives (18), Photos (18)

Burns, Loretta: Research and Oral Histories re: shivaree

Confer, Ogden W. Boiler Pressure testing equipment and weights, Beam Joiner, Steam whistle, Flour container (2) Mother Hubbard, Footstool, Serving dishes (3), Phonograph Record (2) Minnie Hubbard, White leather gloves, Opera Glasses, Baptismal Gown, Photo (2) Hubbard Mill, Photo (2) Palmer family members, Stock Certificates (2) Mankato Mill and R.D. Hubbard Milling Co., Mankato Cookbook, County Map of Minnesota 1881

Dysterheft, Joseph: Dysterheft family items and photos

Erlandson, Teresa: Oil Lamp

Footner, Harry: Book Blind the Second Time

Frederick, Mike: Advertisement Windmill Co., Bookmark River Valley Reads, Books (2) Star Shows, Bottle Coca Cola, Bumper Stickers (15), Buttons (6), Calendars (6), Cap Viking Awnings, Cassettes (3) Lancers, Coffee cups (5), Dispenser ISJ Clinic, Family History Goettl/Sieberg, Family History Haefner/Frederick, Family History Hartung, Fire Insurance Policy Gerald Frederick, Glass (2), Key Ring MSU, Ledger Mankato Production Credit Assn., Magnet Pro-formance Realty, Matchbook Michaels of Mankato, Menu The Fillin' Station, Mug MHS 1973, Napkin SS Peter and Pauls, Newspaper The Loyolan, Ornament Lancers, Paperweight Dotson, Photos (5) BEC people, Pin Caledonain Curling Club, Pin Mankato Chamber, Pitcher Bend of the River Festival, Postcards (6), Programs/Brochures (51), Report Chamber Business and Economic Policy Agenda 2005, T-shirts (2), Yardsticks (2)

Frisch, Carlienne: Video/DVD "Betsy-Tacy and Friends in Deep Valley", Pearl Harbor survivor memorabilia

Frost, Ethel: Medicine Bottles (2), Political Button "Let's Back Ike"

Gens, Kenneth: Records BEC School District 130, Photos (2) Zion Lutheran Church

Grant County Historical Society: Flyer Oftedahl Studio

Grundmeier, Win: Program MSU Commencement 2004, Bible Eastern Star

Herbst, Gordon: Chicago Sunday Tribune Atlas, Photo MN Consistory No. 1 A and A.S.R.

Internal Revenue Service: Farm and Home Plat Directory (2) 1998, 1999, Polk City Directory 1998, 2000, 2001, Polk Cross-Reference Directory 1997

Ireland, Patricia: Photos (18) North Mankato Flood

Jensen, Orville: Quilt - Hmong

Johnson, Leora: Photos (3) Sibley Park Dam, Saulpaugh Hotel

Keir, Grace: Purse

Lavitschke, Jo-an: Menus (2) Mankato restaurants

Mace, Muriel: Foster and Woolcott family papers and photos

Madsen, Jack: Photos (5) - Rapidan Township and Yaeger Bridges

Manthe, Lois: Church Records English Lutheran Church Madison Lake (copies), Church Records Trinity Lutheran Church Madison Lake (copies)

McLeod CHS: Photo Butternut, Photo St. Clair

Nelson, Lloyd and Teresa: Book Glimpses of Our Lives

Oldenburg, Chris: Dress Gunne Sax

Pomeroy, Leigh: Sign Pomeroy for Minnesota

Reasner, James: Envelopes and postmarks

Rezmerski, John: Printed Materials (44), Laundry Mailer, Hospital Bedside Washstand

Schaub, Shirley: Photos (2) buildings Madison Lake, Lists Madison Lake City Clerks, Mayors, Council 1892-2004

Schultz, Jo: Vase MN State Fair 1951, Serving dishes and pitchers (7), Vase green, Lighter International Date line 1953, Souvenir tea set (6 pieces), South Korea Flag, CD Lisa Murphy

Smith, Emmett: CD (2) Mankato History this Month

Swenson, Ralph: 16 mm Film (6 reels)

Torgerson, Allen: Scrapbook Gertrude Fink

Wiecking, David and Mary Jane: Photos (3) Wiecking family

Wiens, Arnold and Barbara: Print Chicago Northwestern Train

Zarn, Nancy: Photo collage of BEC, North Mankato school letter

Notes from the Collections Manager..

This spring will see many changes to the Blue Earth County Historical Society. A new exhibit is under construction in the Gallery. We are excited about the opening of "Down on the Farm: the Agricultural Story of Blue Earth County" on Monday, April 25th at 7 p.m. The exhibit will tell the tale of agriculture through photographs, hands-on activities, and objects from yesteryear.

Big changes are taking place at the R.D. Hubbard House. In March a new heating and cooling system was installed in the Carriage House. This will provide air conditioning in the summer, which will not only please our visitors, but also the objects and vehicles that are currently stored there. Next on the agenda for the Carriage House is to update the exhibits on the second floor. We are looking for anyone that may be interested in helping.

The Hubbard House saw the start of many changes in mid-April. The bathroom on the main floor is being restored to its 1905 grandeur. Including beautiful wood paneling, a copper bathtub and nickel-plated fixtures, the result will be stunning when it's completed. The house is getting a little face-lift this summer with the addition of a new limestone retaining wall and wrought iron fence. Also, a lift will be installed on the basement level for handicap accessibility to the basement.

And if that's not enough, we are planning programs at the house all summer. The house is celebrating the centennial of the Hubbard family's last remodel and redecoration in 1905. So, we are celebrating in style with activities every other Saturday, like a Victorian Lawn Party, a tour of the gardens and an architectural tour of the house. The R.D. Hubbard House will open for the season on Saturday, May 7th from 1-4 p.m. Stop by to see the new features and please excuse our construction throughout the summer.

Speaking of programs, BECHS is introducing a new club, Fingerprints & Footnotes, continuing the Diner's Club and finishing the Young Historians year

with a bang in May. Just check out the calendar on page 15 for a complete list of programs through July. We hope you will make BECHS a part of your spring and summer plans

Jessica Patter
Collections Manager

Recent Donations

Up to \$25

Marks, Thomas
Scheidel, Al & Ruth

\$101 to \$500

Coughlan Company

\$26-\$50

Berg, Ken & Marilyn

\$500 and Up

Bartsch, Glenn
Grundmeier, Win
Jacobson, Lyle & Kay

\$51-\$100

Abdo, Eick & Meyer
Blume, Darwin
McLaughlin, Tom &
Theresa
Rapidan Township
Wolverton, Lorraine

In Kind

Bauer, Kent
Coughlan Company
Greenfield, Gary
Lagerquist, Mike
MSU, Mankato Library
Schultz, Jo

Thank you all very much!

Come Visit the Hubbard House

The house will be open for walk-in
tours every Saturday and Sunday
beginning May 7 through September.

Wander around our beautiful gardens anytime.

Check our calendar on page 15 and join us
for some of the special activities that will
be taking place at the house and grounds
over the summer months.



The
minnesota
humanities
COMMISSION

Return of the Winnebago (Hocak): Reconciliation 142 Years Later Mankato, MN

On May 7, 2005 the Winnebago Tribe of Native Americans will make their first official trip back to Blue Earth County since their removal in the spring of 1863. From 1855 on, the Winnebago had lived peacefully on their reservation then located in Blue Earth and Waseca Counties, but were caught-up in the tragic consequences of the Dakota Conflict of 1862.

The May visit will be an opportunity for the Winnebago people to reconnect with a part of their history that most have nearly forgotten. The day will include a visit to the old Winnebago agency, visits to old village sites, lunch at a still standing chief's house outside of the city of St. Clair, a tour of the Blue Earth County Historical Society's collections, a meeting with the Mayor of Mankato to receive an official welcome and an evening dinner in Rapidan.

The public is invited to meet with the Winnebago at St. John's Lutheran Church in Rapidan at 6:30 PM on May 7. The day's events are being organized by Winnebago Tribal member, Barry Blackhawk, and are being sponsored by BECHS, the Coughlan Companies, the Rapidan Heritage Society, Kwik-Trip and a WE THE PEOPLE grant from the Minnesota Humanities Commission. For more information, call BECHS at 345-5566.



...at the Museum Store

Reflections of Rural Minnesota
Volume I
Presented by The Land

This book is a rich pictorial history of life in rural Minnesota. It features stories and pictures of early farms and rural life from the late 1800s through to present day. 128 pp., 2004. Hardcover, \$39.95

Games From Long Ago
Historic Communities
Bobbie Kalman

This children's book tells of games played before television, radio, and computer. Some are games children have been playing since the beginning of time, others are games that have been lost over time. This is a wonderfully fun book for children and adults. 32 pp., 1995. Paperback. \$7.95

Blue Earth County, Minnesota
Blue Earth County Historical Society

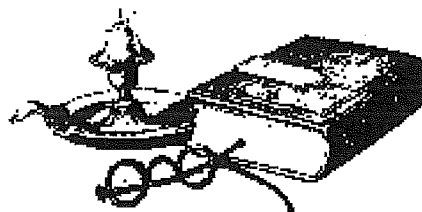
Part of the "Images of America Series," this book features never before published photographs from Blue Earth County, Minnesota. 128pp., 2000, photos, Paper. \$18.99

Marian Anderson Notecards

Notecards with beautiful scenes and landmarks of Mankato., \$1.50 each

Mugs/Travel Mugs

Dark Blue, purple, maroon and black mugs with BECHS logo imprinted in gold. \$4.50. Stainless steel travel mug with BECHS logo in black. \$10.50.



Through the Research Center Door:

I would like to announce the creation of a new club designed for anyone who is enthusiast about history, regardless of experience or specialty. The purpose is to explore all types of history: family, social, community. Research and topics are not limited to Blue Earth County, nor even to Minnesota but anything of general interest. It's all in the search and learning.

We will meet for two hours on the second Thursday of each month. The meeting will be set up in two parts. First there will be a small presentation on a topic of interest which could be anything from the history of ice harvesting on the river, to how to use probate records for your research or what our home movie tell us about the past. The second half will be open for discussion or research. Discussions and research will not limited to the topic of the evening but, rather, the topic will serve as a guide to stimulate the discussion, You're welcome to join, ask questions, present a topic or just come and listen. The idea is to share common interests, learn something new and have fun - not necessarily in that order.

The club, called Fingerprints & Footnotes, will meet for the first time, Thursday, May 12th at 6:00 p.m. in the Blue Earth County Historical Research Center. The first topic for discussion is how to identify and date your photographs. Everyone is encouraged to bring personal "mystery photos". By using personal photos its like show and tell, you get to share your stories and provide some great examples.

There is an annual membership fee to defray expenses, mostly postage or copies. the fee for BECHS members is \$5.00 per year. If you are not a member it's \$10.00. If you aren't interested in joining but are interested in a specific topics there is a fee of \$3.00 per meeting. This is still a work in progress, so ideas and input are encouraged and welcomed.

If you enjoy a good mystery or like solving puzzles then this might be something for you - it's all in the search. If you have any question please call me at 345-5566.

Shelley Harrison
Archivist



History Essay Contest



The Blue Earth County Historical Society
is sponsoring an essay contest for
Blue Earth County 4th through 8th graders.

Topic:
The Settlement and Founding of _____
[any Blue Earth County town or township
of your choice].

One winner will be selected at each grade level.
Prizes will be awarded and the winning essays will be
published in upcoming issues of the Blue Earth County
Historian.

Entry deadline: May 22, 2005

For full details and entry information, contact
Jessica Potter at phone: 507-345-5566,
e-mail: bechs-collections@juno.com
or stop by the Heritage Center,
415 E. Cherry, Mankato, MN.

Volunteers Are Always Welcomed

If you have some time to spare to help us
preserve history, please give us a call. Some
examples are:

*serving as tour guides
participating on committees
doing data entry for Archives indexes
indexing census or newspapers
researching and/or writing*

Volunteer Appreciation Month

The following is a list of those individuals who have volunteered with us between January and December 2004

Apitz, Darrel
Baer, Marcia
Baird, Jane
Baldwin, Sara
Bartholdi, Roberta
Bartsch, Glenn
Bauer, Pat
Belgard, Vail
Bergquist, Roger
Biegler, Janette
Black, Kathy
Burns, Inella
Burton, Ronnie
Coleman, Mary
Cords, Betty
Das, Dee
Demars, Jeanne
Dooley, Mary
Douglas, John
Douglas-Hennis, Brandi
Falencykowski, Lona
Fowler, Bridget
Francis, Pat
Frederick, Michael
Geister, Dave
Goff, Harley
Goschy, Deb
Graham, Joanne
Griffith, Helen

Grundmeier, Shirley
Grundmeier, Win
Hagen, Tom
Halling, Christine
Hanson, Kathryn
Hennis, Larry
Henry, Betty
Herbst, Gordon
Hogan, Pat
Hopman, Edith
Hugg, Bob
Hugg, Corey
Jansen, Steve
Jarvis, Linda
Jensen, Mary Ann
Jensen, Orv
Keir, Richard
Keir, Grace
Kind, Arn
Kroon, Dani
Kubicek, Joe
Kubicek, Sylva
Lagerquist, Mike
Lamson, Barb
Lavitschke, Jo-an
Lundblad, Larry
Madsen, Jack
McComb, Mary
McCullough, Beth
McGowan, Mike
McLaughlin, Theresa
McLaughlin, Tom
Meagher, Lindsey

Natysin, Rhonda
Niu, Dana
Norman, Beth
Nussbaumer, Linda
Ohlenkamp, Ora
O'Malley, Helen
Pelz, Zach
Rezmerski, John
Ries, Bill
Rodvik, Angie
Salsbery, Tom
Sandon, Buzz
Sassenberg, Eunice
Schaefer, Dawn
Schmidt, Roberta
Schmitz, Leora
Schrader, Julie
Schultz, Jo
Shortall, Christina
Smith, Emmett
Smith, H. Roger
Sofchalk, Helen
Steichen, Frank
Story, Sue
Sugden, George
Tarjeson, Jane
Twilight Garden Club
Ward, Mary
Webb, Donna
Wilson, Bernadette
Wright, Lorraine
Ziegler, Ken
Zielske, Dan
Zimmer, Beth

Whether you give a day a week, several hours a month or come once a year, your time is a precious commodity and we are grateful for any you are willing to spend with us. To our past, present and future volunteers,

Thank you Dank Je
Go raibh maith agat

Merci
Takk

Dankeschoen
Dziekuje Gracias

Blue Earth County



Membership Form

Yes, I would like to become a member of the
Blue Earth County Historical Society!

Member Levels*

- | | |
|---|---------|
| <input type="checkbox"/> Individual Student | \$20.00 |
| <input type="checkbox"/> Individual Senior | \$20.00 |
| <input type="checkbox"/> Individual | \$25.00 |
| <input type="checkbox"/> Household | \$35.00 |

Send completed form to:
BECHS Membership
415 Cherry Street
Mankato, MN 56001

Donor Levels*

- | | |
|-------------------------------------|-----------|
| <input type="checkbox"/> Booster | \$100.00 |
| <input type="checkbox"/> Sponsor | \$500.00 |
| <input type="checkbox"/> Benefactor | \$1000.00 |
| <input type="checkbox"/> Patron | \$5000.00 |

* For Business Membership information, please contact the BECHS office

BECHS Membership Benefits:

- Support preservation of our heritage
- Free admission to the Hubbard House
- Free admission to the Exhibit Gallery
- Free access to the Research Center
- Invitations to special events
- 10% discount at the Museum Store
- Reduced admission to special programs
- Quarterly history publication

Name: _____

Address: _____

City, State, Zip: _____

Telephone: _____

E-mail: _____

☐ Please send me information about becoming a BECHS Volunteer



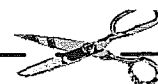
Archaeology Week Open House

Understanding and Preserving
Minnesota Prehistory
May 10, 2005, 1:00 to 4:00
BECHS Orientation Room

Come and see our exhibit on the cultures that lived
in SE Minnesota up to the period of
European Contact.

Lindsey Meagher, MSU Graduate Student, will be
available to answer your questions on the exhibit,
on preservation of sites and artifacts, on what you
should do if you discover a site and any other
archaeology questions you may have.

The exhibit itself will be available for your viewing
during the month of May



WISH LIST

- Cordless drill and drill bits
- Working vacuum cleaner or carpet sweeper
- Surge protector for use at programs and with computers.
- Copy paper
- Glassware for the Hubbard House
- *Maple River Messenger* on microfilm
- *Lake Crystal Tribune* on microfilm
- *Mankato Free Press* on microfilm

Wish Fulfilled
1930 Census

Available now Thanks to Marilyn Berg



Upcoming BECHS Events

Please mark your calendar and join us.

Saturday & Sunday, May 7-8, 1-4 p.m.
Opening Weekend
Hubbard House Summer

Saturday, May 7, 1-4 p.m.
Hubbard Family History
Hubbard House

Saturday, May 7, 6:30 p.m.
**Return of the Winnebago (Hocak):
Reconciliation 142 Years Later.**
St John's Lutheran Church, Rapidan

Monday, May 9, 11:30 a.m.
Blue Earth County Diner's Club
Eagles Nest
Eagle Lake

Tuesday, May 10, 1-4
Archaeology Week Open House
Understanding and Preserving Minnesota Prehistory
BECHS Heritage Center

Thursday, May 12, 6 p.m.
Fingerprints & Footnotes Club
Identifying and Dating Photos
BECHS Research Center

Saturday, May 14, 10 a.m. - noon
Young Historians
WWII
BECHS Heritage Center

Saturday, May 21, 1-4 p.m.
Indoor Victorian Games
Hubbard House

Saturday, June 4, 1-4 p.m.
Victorian Lawn Party
Hubbard House

Sunday, June 5, 2-4 p.m.
Cemetery Tour
Minneapoa Cemetery 150th Anniversary
Minneopoa Cemetery

Thursday, June 9, 6 p.m.
Fingerprints & Footnotes Club
Little Computer Helpers
BECHS Research Center

Tuesday, June 14, 11:30 a.m.
Blue Earth County Diner's Club
Trailblazers
Madison Lake

Saturday, June 18, 1-4 p.m.
Historic Vehicles
Hubbard House

Tuesday, June 28, 7 p.m.
Mankato Municipal Band 1920's Band Concert
Sibley Park Band Shell

Saturday, July 2, 1-4 p.m.
Picnic on the Hubbard House Lawn
Hubbard House

Monday, July 11, 11:30 a.m.
Blue Earth County Diner's Club
Screamin' Eagle
Mapleton

Thursday, July 14, 6 p.m.
Fingerprints & Footnotes Club
Poor Farms and Orphanages
BECHS Research Center

Saturday, July 16, 1-4 p.m.
Architecture Tour
Hubbard House

July 28-31
Blue Earth County Fair
Garden City

Saturday, July 30, 1-4 p.m.
Tour of the Hubbard House Gardens
Hubbard House

**Those interested in any of the above activities, please contact
BECHS at (507) 345-5566 for questions or for reservations.**

New and Renewed Members

Abdo, Eick& Meyers, LLP
Affolter, Ronald
Anderson, Mary V.
Ardorf, Ms. Judy
Balcome, Helen
Barber, James
Barnhart, Patricia
Barrett, Mary
Bartsch, Glenn
Bessler, Marilyn & Bill
Botten, Joel
Braam, Cindy L
Braam, Gene
Burns, Inella
Burns, Lorretta
Cherney, Tim
Compton, Harlan
Crane, Donald & Sue
Dobie, Joseph M.
Duane, Susan
Falencykowski, Lona
Faust, Claire & Hazel
Franklin, Elizabeth
Frederick, Michael

Frisch, Carlienne
Garlow, Darrell & Sandi
Goodrich Construction, Inc
Grundmeier, Winston & Shirley
Habein, Dr. & Mrs. H.C
Higginbotham, Jack & Shirley
Hilleiggs, Marcella
Hinrichs, Bill
Hottinger, Father Ted
Huettl, John
Huettl, Richard
Jerabeck, Barbara
Joyce, Ron
Junge, Robert
Just, John
Keir, Grace & Richard
Kraft, Judy
Lamson, Barbara
Lavitschke, Jo-an
Leeman, Harold
Madsen, Tim & Liz
Pulis, Tim
Rautenkrantz, David
Resner, Joe & Donna

Roth, Katie Nerem
Ryan, Thomas
Salsbery, Tom & Cindy
Salsbery, Mr. & Mrs. Verle
Sassenberg, Eunice
Sassenberg, Karl
Schiedel, Al and Ruth
Simonett, Patricia & James
Sohler, Lois
Sontag, Leola
Svenson, Sigvold
Tarjeson, Jane
Thiesse, Mr. & Mrs. Sylvan
Tires Associates
Torgerson, Allen & Jane
Vik, Linda & Dennis
Wenner, Gerry, Kris, & Robert
Wilmes, Brad
Wingen, Carol
Wittrock, John & Eleanor
Wolverton, Lorraine
Yale, Kathy
Zimmer, Beth



Blue Earth County Historical Society
415 East Cherry Street
Mankato MN 56001

Non-Profit Org.
U.S. Postage
PAID
Mankato MN
56001
Permit No. 343

Preserving and sharing Blue Earth County's history since 1901