



The Blue Earth County Historian

A publication of the Blue Earth County Historical Society

Spring 2002

(The following is a reprint of parts of an article written by Wm S. Sargent, Register of Deeds, in June 1859, and published in the first issue of the *Mankato Weekly Record* on July 5, 1859)

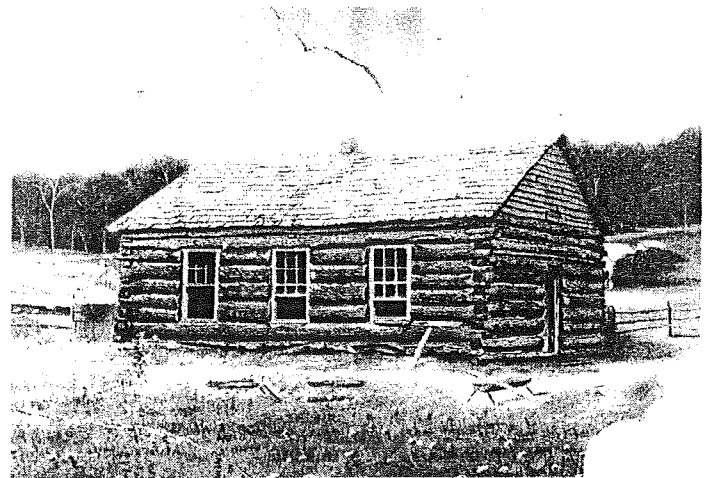
Blue Earth County First Settlement, etc.

Pursuant to request by your circular of interrogatories, I hasten to reply; and will briefly state, in answer, so far as my knowledge and experience extends, in regard to the subjects of which you wish information.

The settlement of the county was first made in February, 1852, by P. K. Johnson and Henry Jackson, who built the first cabins in the present limits of Mankato, which was laid out as a town in the summer of 1852, by Henry Jackson, D. A. Robertson, Samuel Leech and others, all known as the first settlers of Minnesota.

During our early history we had rather crude notions of the laws of the United States respecting the ownership of land, &c., and the antiquarian may be interested in learning that among the first steps taken by the first settlers of this country, was the organizing of a claim company, to be called "The Blue Earth Settlement Claim Association," with a code of by-laws which is signed by twenty-four persons, consisting of Messrs. H. Jackson, P. K. Johnson, J. S. Hinckley, Evans Goodrich and others. Among the twenty-four names are to be seen those of J. M. Castner, D. Kennedy, and Samuel Leech, who have never resided here for any length of time. It would appear that when anyone made a claim about Mankato, or in the county, he would go to P. K. Johnson, Esq., who was the secretary or recorder for the company, and have a record made of the description of the particular locality which he claimed.

This county was organized in March, 1853, and J. W. Babcock, Ephraim Cole and Jacob Guenther were appointed commissioners, and Edwin Perkins, register of deeds. Mr. Perkins officiated but a short time, and on his resignation, P. K. Johnson, Esq., was appointed. The first election in this county was held in October, 1853, at Kasota, (then in this county) and at Mankato, at which election Mankato had eighteen votes and Kasota ten; these places being the only precincts in this county. At the next election in October, 1854, South Bend having before been established a precinct, cast five votes, Mankato forty-five, and Kasota twenty-three, making in all seventy-three voters in the county and an increase in that year of forty-five voters. At the election in October, 1855, eighty-six votes were cast. In 1856, two hundred and sixteen, and in 1857 one thousand one hundred and thirty-one.



First school in Blue Earth County, 1855

The population in 1852, the date of the first settlement of the county, could not have been more than ten persons. The census taken in 1857 shows a population of 3,629, making an increase in five years of 3,619.

Continued on page 2

***The Blue Earth County Historian
Spring 2002***

The Blue Earth County Historian is published quarterly for the members of BECHS. BECHS has the mission of collecting, preserving and publishing material relating to the history of Blue Earth County.

Board of Trustees

Jane Tarjeson – President
Theresa McLaughlin – Vice President
Bernadette Wilson – Treasurer
Marcia Baer – Secretary

At Large Members

Mary Barrett	Dave Boyce
Mike Frederick	Tom Hagen
Joe Kubicek	Jo-an Lavitschke
Larry Lundblad	Jack Madsen
Donna Webb	Daniel Zielske

Staff

James Lundgren	Executive Director
Jessica Potter	Collections Manager
Mary McGrew	Museum Assistant
Shelley Harrison	Archives Assistant
Larry Haring	Custodian

Join Us!

Please consider joining BECHS. Members receive free admission to the Heritage Museum, free access to the research center, free admission to the R. D. Hubbard House non-event tours, reduced admission for special events, quarterly newsletter, discount on many items in the museum shop, and the ability to help preserve the heritage of Blue Earth County!

These levels are in effect until Aug 31, 2002.

Membership Levels

Student:	\$15.00	Individual:	\$20.00
Household:	\$30.00	Patron:	\$100.00
Business Associate (1-10 employees)	\$25.00		
Business Affiliate (10-50 employees)	\$50.00		
Business Sponsor (50+ employees)	\$100.00		

Please write your Name, Address, Phone number and e-mail address on a card and send it along with your check payable to BECHS and send it to BECHS 415 Cherry Street, Mankato MN 56001. Your e-mail addresses will be used to send notices of programs, exhibits and other BECHS news. It will not be given or sold to anyone.

Please contact us at: 507-345-5566 or by e-mail at:
James Lundgren: bechs@juno.com
Jessica Potter: bechs-collections@juno.com
Mary McGrew: mary-bechs@juno.com
Shelley Harrison: bechs-research@juno.com

Continued from page 1

The Rivers. -The county is well watered by the Blue Earth, which runs through the center of it and empties into the Minnesota at Mankato. The following rivers take their rise in this county and empty into the Blue Earth: the Watonwan, LeSueur, Maple, Little and Big Cob. They are streams of considerable size. The Blue Earth is the largest. These rivers have an abundance of water power. At Garden City, on the Watonwan River, there are two mills, and one at Watonwan City, all of them in operation, and with an abundance of water to drive them at all seasons. One of the mills at Garden City has a grist mill attached, which is kept in constant operation. On the Blue Earth river, about a mile above Vernon, there is a mill privilege, as yet unimproved, and another at the Blue Earth Rapids, about 12 miles from Mankato, which is beyond doubt inferior only to the one at St Anthony Falls.

Soil, &c. -It is conceded by every person that Blue Earth County is one of the best, if not the best, agricultural county in the state, with soil unsurpassed and scarcely one acre of waste land. The eastern part of the county is a solid body of timber, consisting of burr maple, poplar, and black walnut. This timber country is dotted over with beautiful lakes. The largest is Madison, about ten miles long and two in width. The next in size is Eagle Lake, three miles long and two in width. The balance of these lakes are of smaller size. In the southern part of the county there are Lura and Jackson lakes, both nearly as large as Madison Lake. In the western part of the county there is a chain of lakes, four in number, extending about eight miles with an average width of one and one-half miles. For a distance of nineteen miles, the Minnesota River constitutes the northern boundary of the county, which is heavily timbered, bordering on a fine prairie which is well settled by thrifty farmers. All of the country of the Blue Earth, Maple, Watonwan and Cobb rivers are heavily timbered and borders on the finest prairies. Upon the large prairies, even if away from the streams, timber in groves is found sufficient for claimants. The soil on the prairies is of a sandy loam, while in the timber it is clay, both of which are adapted well to the raising of wheat, oats, corn, rye, potatoes, &c.

Continued on page 3

Continued from page 2

Townships. -There are at present fourteen full townships and three fractional townships in the county, containing 350,000 acres, three-fourths of which are properly preempted by industrious and worthy farmers.

Towns. -Mankato is situated on the south bend of the Minnesota River and is ninety-five miles from St. Paul by land, and about one hundred and fifty miles by river, and contains a population of about fifteen hundred. In number of inhabitants, amount of trade and of commercial importance, it is conceded by every one to be the largest town on the Minnesota River, and promises to be the third in size in the state. There are nineteen stores, five hotels, two saw mills, and three religious societies, the Presbyterian, Methodist and Roman Catholic. Mankato is the point where all or nearly all the goods for the country are landed and taken by teams to different parts of the country. Her back country is most rich in soil and extends at least eighty miles.

During the year 1858 we had one hundred and seventy-nine steamboat arrivals.

For the last three months more good and substantial buildings have been erected in this place than during any year previous. On the north of Mankato there is Col. McKenty's addition, on the northeast Parson's and Lay's additions, on the south

Brandson's addition and Willard & Besser's addition, and on the west Cumming's addition. West Mankato and Le Hillier make a continuous town from Mankato to South Bend, a distance of about three miles.

About four miles from Mankato there is one of the most attractive falls in the United States. They are called Minneopa or the "laughing falls". They consist of two falls and are about twelve yards apart. The

smaller one falls to the depth of ten feet, and the larger from seventy to eighty feet.

West Mankato and Le Hillier are in a flourishing condition and contain many well built homes. At the former place there is a large hotel kept in fine style.

South Bend, the next town in the county, is situated on the Minnesota River three miles southwest of Mankato, and contains a population of about six hundred, and unlike many western towns of "magnificent distances," it is compactly built. It contains a large hotel, a number of stores, offices, and two steam saw mills, and receives a good share of the steamboat custom of the Minnesota River. It is a flourishing place, and we look forward to the time when South Bend and Mankato will be one town.

Judson, situated on the Minnesota River, was laid out in 1856, and contains about thirty houses and a

population of about two hundred, and is a very flourishing town. Most of the inhabitants are Welsh, and are noted for their industry and integrity.

Butternut Valley, situated on the Minnesota River, and like Judson, contains a population of over one hundred, consisting mostly of Welsh, and is also in a prosperous condition.

Garden City, situated on the Watonwan River, in a southwesterly direction and twelve miles from Mankato, was laid out in 1856, and contains a population of between three and four hundred, a large hotel, two water mills, one of which has a grist mill attached, two or three

stores, a post office, and is the location of the Farmers' Bank, which has for its securities the Minnesota 8's, being worth now in New York \$1.04. Garden City is in a flourishing condition and will eventually make a large place. Its citizens are principally natives of New England. The scenery in and about Garden City is strikingly beautiful.



Minneopa Falls

Continued on page 4

Continued from page 3

Watonwan, situated on the Watonwan River, was laid out in 1857, and contains a population of fifty, has a saw mill and some buildings.

Vernon, situated on the Blue Earth river, about sixteen miles southwest from Mankato, contains a population of about two hundred, two or three stores, a post office, hotel, and one of the best steam mills in the state. Improvements are steadily advancing in this place.

Shelbyville, about eight miles further south, contains a population of about three hundred and fifty, two steam saw mills, a church, three or four stores, a post office, was laid out in 1856 and is situated on a splendid prairie which is surrounded by timber in abundance. A large number of fine houses are now being erected in this place, and it is a most excellent situation for a town.

Mapleton was laid out in 1857 by a colony that arrived in this county in 1856. It contains a steam saw mill, a store, a post office, some dwelling houses and a population of about one hundred. This place is well selected as a town site on account of the vast prairies and abundance of timber which must necessarily be important elements to its growth and wealth.

Mails. -We have good mail facilities, as each of the towns enumerated in the foregoing list has at least a tri-weekly mail. Mankato has one from St Paul, one from Otranto, one from Owatonna, one from Forest City, besides the tri-weekly from the western part of the county.

Roads and Bridges. -We are well advanced in roads, and some of the streams bridged. The Big Sioux and Mendota road passes directly through the county, with a fine bridge across the Blue Earth River, between Mankato and South Bend. The Blue Earth is also bridged at Vernon. The Watonwan River is bridged at Garden City, and also at Watonwan City.



From the Executive Director.

This summer newsletter is the first issue for our new editor Donna Webb. She agreed to take over the editing duties and has many ideas for newsletters that will be informative, entertaining and will help us fulfill our mission of preserving and promoting the history of Blue Earth County. We hope that you will continue to enjoy the newsletter and let us know what types of articles you would like to see. Thank you, Donna, for taking on this project!

Like many organizations, the Blue Earth County Historical Society has had its growing pains. A recent increase in our rent has our Board of Trustees holding some strategic planning retreats to decide what needs to be done in order to keep the society operating under increasingly rising costs.

One decision the Board of Trustees made, in preparation for a fund raising campaign, is to evaluate the membership fee structure. The Board of Trustees approved increasing some of the basic levels by \$5.00 per year and created new donor levels and an Individual Senior Membership. The new levels will be implemented on September 1, 2002. This allows time to renew at the lower levels if desired.

The basic membership fees have not been increased since 1988. The Board of Trustees was reluctant to raise fees, but feel that this should be a part of the process in maintaining financial stability.

New Membership Fees

(Effective 9-1-2002)

Personal Memberships

Individual Student	\$20.00
Individual Senior	\$20.00
Individual	\$25.00
Household	\$35.00

Donors

Booster	\$100.00
Sponsor	\$500.00
Benefactor	\$1,000.00
Patron	\$5,000.00

The Board of Trustees is also looking at various fund raising efforts in a series of strategic planning meetings being held this summer. A fund raising event will be held this fall. Look for the details for the antique appraisal fair in this newsletter.

As the Board of Trustees discusses the future direction of BECHS, they are very interested in hearing from our members. We have enclosed a survey to help us decide what our main objectives should be. We realize that many people do not like to fill out surveys, but hope that many of you will take a few minutes to let us know what you think of your county historical society, and where you want to see it head during our second century of operations.

A Success Story

Earlier this year our research department received a letter from a World War II Veteran who was looking for a man he served with but had lost contact with many years before. Mr. Edwards had contacted various organizations, military and educational without success. He had even visited the house the Andersons had lived in 50 years ago, but none of the neighbors had lived there long enough to be of help. He did learn of an obituary in 1951, but did not know if this was his friend, his friend's father, or someone else with the same name.

Our research department was able to determine the 1951 obituary was not for the family he was seeking but that we did have the father's obituary from 1975. This item noted the surviving son was in Pleasanton California. With this information, he successfully located his friend a short time later.

Last month, Mr. Anderson donated an indexed, printed copy of the 1880 census for Blue Earth County. This will make it much easier for future researchers to find the names they want without having to search record by record. We are very happy to be able to provide the answers to many of the questions placed before us. This particular case resulted in additional research materials making it even more worthwhile for us.

James Lundgren, BECHS Executive Director

Recent Financial and Equipment Donations

Barrett, Mary
Blue Earth County
City of Mankato
F. B. Clements Foundation
Dotson Company
Fields, Elaine
Grundmeier, Win
Hilltop Florist
Jensen, Orv
Jenkins, Margaret
Johnson, Barbara
Jones Richards, Marcia
Kubicek, Joe

Krassin, Kim
LaFavor, Lyle
Medo Township
Owens, Tee
Pettipiece & Associates
Piepho Moving & Storage
Rapidan Township
Schultz, Jo
Solchalk, Helen
Tarjeson, Jane
Webb, Donna
Wright, Lorraine
Zielske, Dan

Thank You All Very Much!

New and Renewed Members

Barber, Eddice
Barrett, Mary
Broadwell, Donald & Linda
Dobie, Joseph
Franklin, Elizabeth
Friedrichs, Fred
Gage, Kelton & Dorothy
Hill, Evelyn
Hoehn, Pat & Jim
Huffman, Eva
Jerabek, Barbara
Johnson, Barbara
Johnson, Gary
Johnson, Marguerite
Lahann, Dell & Flo
Land to Air Express
Larson, John
Lee, Elaine
Madelan, Ethel
Madsen, Jack
Masberg, Rita
McLean, Edward F.
McNear, Virginia
Neilsen, Gerald

Nimmerfroh, Larry
Niu, Dana
Norman, Beth & John
Petterson, Lundgren, Molly
Peterson, Mary Helen
Pond, Patricia
Prechel, Clare
Rettmer, Forrest & Georgia
Ries, W.C.
Roberts, Craig
Roe, ETI (SW) David
Rose, Robert & Luella
Sampson, Lois Risser
Schaub, Shirley
Solie, Tim
Stoeckli, Ina
Thompson, Joanne
Vik, Dennis & Linda
Wenner, Gerry & Kris
Wittrock, John & Eleanor
Wolverton, Lorraine
Wright, Lorraine
Zaragoza, Anthony

Notes from the Collections Manager...

Preservation is one of the main concerns for a museum, historical society and family historian. There are a few key terms to understand before beginning your preservation project. *Acid-free* is the process where the chemical acids in paper are removed to create a pH neutral product. *Lignin-free* is the process where lignin (a chemically complex substance found in tree pulp) is removed from the paper product. Lignin and acids are believed to contribute to the yellowing and fading of papers and photographs. (ie. Newspaper is highly acidic and contains lignin). *Buffered* paper neutralizes acid contaminants and is recommended for the storage of paper and photographs. These terms are important when using paper products for photograph, scrapbook, document and book storage.

There are also "safe" plastics to use with your family treasures. The "safe" plastics are composed of *polyester, polyethylene or polypropylene*. These plastics are considered safe for use with photographs and papers. Polyvinyl Chloride is a harmful plastic product which emits hydrochloric acid upon its degradation.

Photograph Care Tips:

- Use scrapbook and mounting pages that are acid-free, lignin-free and buffered or use polyester/polyethylene/polypropylene photo sleeves. DO NOT use "magnetic" or polyvinyl chloride plastic photo albums. Both types of photo storage will contribute to the fading, yellowing and deterioration of your photographs.
- Use photo-mounting corners to mount your photographs and use document repair tape to repair your photos or documents. DO NOT use rubber cement, glue or scotch tape to repair or mount. The chemicals in these products will cause your photos and papers to yellow, fade and curl.
- Use a photo marking pencil to write on the backside of your photographs. A ballpoint pen will bleed through your photo and a regular pencil will break the resin coating on the back of the photo.

- Store your photographs and documents where you live! Photos, documents, books and textiles will last longer if not exposed to extreme temperature and humidity changes found in the attic and basement of the common home. Store your family treasures on the main floor in a closet with only interior walls and they should last for future generations.

The Blue Earth County Historical Society Gift Shop carries many of the archival supplies mentioned above. If you have any questions on how to get started or how to preserve a specific item, please feel free to contact me anytime.

Jessica Potter, BECHS Collections Manager



Madison Lake Area Historical Society

This is the anniversary of the founding, 20 years ago, of the Madison Lake Area Historical Society. It has been the only active chapter of the Blue Earth County Historical Society over most of those years. The Madison Lake Area Historical Society was incorporated on September 15, 1982. There are currently 55 members in good standing.

The purpose of the Society has been to collect photographs, artifacts and, especially, stories and events happening to the people in the Madison Lake area. Two of the founders, Ted Roemer, the first president, and Morris "Doc" Sheppard, an original board member, are still active.

The current President is Jerry Frederick; Vice President, Shirley Schaub; Secretary, Jo Schultz; and Treasurer, Bill Ries. The Board Members are Donna Daschner, Tony Reintjes, Ann Doran, Lorraine Frederick and Mike Frederick. The Society meets the third Wednesday of each month from April to December.

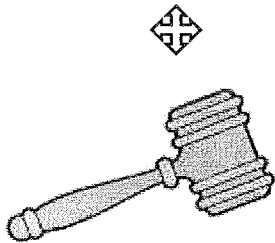
Jo Schultz, MLAHS Secretary

Rapidian Heritage Society

Excitement was high as the depot was moved into Rapidan - after an

absence of 44 years it is now back to its original location. It will be restored in stages over the next couple years. RHS is planning a one-day bus trip to Currie, MN, to visit the End-O-Line Railroad Park & Museum on Sept. 7th. Join us on a visit to a restored depot, turntable, section house, school and general store and learn more on how the railroad led to the expansion and growth of the West. For more information, call Jane at 507-278-3738.

Jane Tarjeson



From the President

This is an exciting year, our 100th! The staff and committees have been working very hard to make this a memorable time for BECHS members. Quite a number of informative and interesting programs have been offered, ranging from early native corn to steam boating.

The spring TLB8 bus trip was a classroom on wheels, the participants following on the trail of Lewis & Clark - learning about 1800's life and appreciating the conveniences of 2002. If you have not had an opportunity to attend one of these, check out the upcoming programs being offered! Your support is appreciated!

Jane Tarjeson, BECHS President

Volunteers Are Always Needed

If you have some time to spare to help us preserve history, please give us a call. We can find a project to suit your interests. Some examples are:

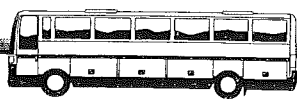
clipping and indexing newspaper articles
data entry to help automate our collection records
filing
guiding tours
helping at the county fair and other events
researching and writing articles
helping in the research center
cataloging the archives collection

BECHS Volunteers since the last issue

Apitz, Darrel	Kloss, Sarah
Baer, Marcia	Kennedy, Sue
Baird, Jane	Kubicek, Joe
Bartsch, Glenn	Lavitschke, Jo-an
Bergquist, Roger	Lundblad, Larry
Boyce, Dave	Madsen, Jack
Burns, Inella	McComb, Mary
Burton, Ronnie	McGowan Family
Christenson, John	McLaughlin, Theresa
Coleman, Mary	McLaughlin, Tom
Cords, Betty	Neilsen, Gerald
Cotton, Rose	Niu, Dana
Demars, Jeanne	Norman, Beth
Dooley, Mary	Nussbaumer, Linda
Doss, D.	O'Clock, Clara
Falencykowski, Lona	Ohlenkamp, Ora
Frederick, Michael	Otto, Ruth
Graham, Jeanne	Patterson-Lundgren, Molly
Goff, Harley	Salsbery, Tom
Goschy, Deb	Sandon, Buzz
Griffith, Helen	Schmidt, Roberta
Grundmeier, Shirley	Schultz, Jo
Grundmeier, Win	Smith, H. Roger
Hagen, Tom	Sofchalk, Helen
Hanson, Kathryn	Tarjeson, Jane
Haas, Chrissy	Thomas, Jo
Hadley, Paul	Twilight Garden Club
Herbst, Gordon	Webb, Donna
Hentges, Seth	Wilson, Bernadette
Hopman, Edith	Wright, Lorraine
Jansen, Steve	Ziegler, Ken
Jensen, Orv	Zielske, Dan
Jensen, Mary Ann	Zimmer, Beth

**Archives and Artifact Donations
April –June 2002**

- Anderson, Laura:** Photograph of Good Thunder Churches
- Anonymous Donor:** Plastic Hat "Bridge Inspector 1986", Almanac and Political Handbook 1898, 1950 Census of the United States, Election Law of 1891, Shoemakers Directory 1881-1882, Shoemakers Directory 1888
- Bartholdi, Roberta:** State Teachers College Catalog 1925-26, Notecards of Betsy Tacy homes
- Bierbauer, Charlene:** Bierbauer family photographs, Pennant for MHS 1915, Membership books for Kato 30/40 Club, Newsletters and Newspapers for Kato 30/40 Club
- Bradshaw, Louise L:** Mankato German Newspaper, Blotters - Henry F. Leonard Insurance Co, Photographs of Elizabeth M Lorentz, Leonard Lorentz, and Quirinus Leonard
- Carr, Margaret Williams:** Book: *Uncle Wills Letters about Early South Bend Village, 1853*
- City of Mankato:** Lincoln Park Historic District Registration Forms
- Coughlan Company:** Check printer, T. R. Coughlan Company Seal, Lime Company Seal
- Demaray, Lyman:** Information about Fastpitch Softball Tournaments and Teams 1980s-1990s
- Dowlin, Sheryl:** Video "Mahkato Education Day"
- Eberhart, David:** Scrapbook of Dr. Leidloff
- Erlandson, Teresa:** City of Mankato calendars 1970-1980, Matchbooks for Bretts 100th Anniversary, Blotter - National Bank of Commerce 1954
- Frederick, Mike:** Flyswatter, Coat Hanger, Bottle - Key City Beverages, Poster - MSUM "Butterflies are Free", Mankato Mashers 1999 Game program and schedule, Northwoods League Baseball brochure, Poster of Farmfest 1972 and 1976, Genealogy - Frederick Family
- Frost, Katherine:** Book: *Parson's Handbook of Forms*
- Gruidl, Jacqueline:** Framed photographs of Mankato and MSU
- Grundmeier, Win and Shirley:** Slides of History Museum Fest, Slides of Mankato and Blue Earth County, Postmark Cover - "Little Cobb, MN"
- Jobe, Judy:** Baby clothing and linens from Lorentz Family
- Johnson, Robert:** Otaknam, 1923-1925
- Kohls, Nancy Sontag:** Genealogy for Sontag Family
- Kreuger, Virginia:** Postcard of Main Street Good Thunder
- LaFavor, Lyle:** (2) Minnesota License Plate - "Pearl Harbor Survivor"
- McComb, Mary:** Teachers Report to Parents, 1909-1910, State H. S. Board of Exam, State Board Exam in Spelling certificate, McPherson Cemetery receipts, Infant's dress, Slippers, and Shoe
- McMahan, Jessica:** Genealogy chart for Flanagan Family, Catalog for Mankato State Teachers College 1940, Receipts
- Norman, Beth:** Lake Crystal Area Senior Citizens Club Scrapbook and Minute Books
- Nuessle, Ruth:** Postcard of Mankato Front Street, 1908
- Quintero, Guadalupe:** Aztec calendar, Table Cloth with Aztec design, United Farm Workers of American flag, Day of the Dead doll, (2) Woven Aztec Textiles, Our Lady of Guadalupe picture, Blanket (Zarape), Valero, Plate, Mexican Doll Bank, Jarritos
- Richards, Marcia:** Chautaugua Program 1922
- Salsbery, Caroline:** Photo of Mankato Railroad
- Schons, Michael:** Native American Stone Tool
- Schrader, Julie:** Book "Mankato Milestones", Photographs of Highland Park marker
- Schultz, Jo:** Photographs of Oscar and Brian Dagan
- Skachkova, Penka:** Poster of "Oral Histories of Immigrant Somali, Mexican and Hmong Women in Mankato", Photographs of Interviewees, Transcripts and Cassettes (29) of Immigrant Oral Histories, Video - Oral Histories presentation
- Tabbert, George L.:** "History of Tourtellotte Parkway", "History of Anderson Park", "History of Urban Ravines", "History of Playgrounds and Tennis Courts", "History of Coasting Hills and Skating Rinks", "History of Neighborhood Parks"
- Valdez, Blanca:** Child's Mexican Shirt and Skirt, Tortilla Maker, Spice Grinder
- Wahlstrom, Dennis:** Video and program for "Man on a Mission"
- Ward, Rebecca:** Framed photograph of First National Bank
- Wegner, Sara:** Hmong Christmas ornament
- Winnebago Area Museum:** Postcard of St Joseph Hospital
- Wood, Richard:** Postcard of Mankato Bazaar



**Travel Like Bert #9
Conflict of the Dakota and the Settlers,
1862**

Sept 17-20, 2002

The Blue Earth County Historical Society offers its 9th tour, viewing and learning the history of this area and its relation to Blue Earth County.

This fall we plan to study and visit the sites that played a part in the Dakota Conflict. We'll spend 3 nights and 4 days in the process of looking at the causes of the conflict, studying the important individuals and the part they played, and seeing the locations of important incidents that were vital to the outcome of the action.

We expect that there will be heavy interest in this trip. Please indicate your interest early, just drop a note or give a call saying that we should save a seat or two or three for you. A more complete brochure is available by stopping in, calling or writing the BECHS office.

Questions: phone Boyce at (507) 388-3658

Great Expectations!

On Saturday, October 5, 2002, the Blue Earth County Historical Society (BECHS) will be hosting an Antique Appraisal Fair. The Fair will be held at the Mankato Place (downtown mall) from 9:00 to 4:00. Local appraisers will be appraising various antiques at the cost of \$10.00 per appraisal. The ten-dollar cost is a donation to help BECHS offset their budget deficit due to an increase in the rent.

This is a great opportunity to see if your family heirloom is valuable or if the family history of the item is correct. Look through your attic and closets, maybe you have an old toy, book or bobble that you might think has some value - bring it to the Fair. The donation will help both you and the Historical Society. It should be an interesting and fun day!

We need volunteer appraisers and helpers to make this fundraiser a successful event. We need people who can give verbal appraisals on any type of antiques. Also, people who can help with collecting tickets/money, serving snacks/lunch, setting up/taking down, or in any other way with this event. You can volunteer for a couple of hours or for the whole day - whatever you wish. If you can help us out, please call BECHS at 507/345-5566 or Theresa McLaughlin at 507/388-7647.

Upcoming Events at Area Historical Societies

Brown County Historical Society

- The New Ulm Cemetery Tour will be held August 18, 2002
- The "Loyalty & Dissent" on the Home Front, WWI Exhibit will continue through September 14, 2002.

Freeborn County Historical Society

- "Autumn In The Village", Sept 15, 1-4 pm, a day of pioneer skill demonstrations - wood carving, spinning, storytelling, brass bands, apple pie and ice cream and a slide show.

Martin County Historical Society

- Cracker and Cider Party, Sept 29, 1:30-3:30 p.m.

Waseca County Historical Society

- The artwork of Eugene Iverd and George Ericson will be on exhibition from Aug 4 through Sept 6.
- The Bailey House will host "Garden Tour 2002" on August 4, 2002, from 1-5 p.m. The Bailey gardens include heirloom plants and vegetables that would have been available in 1868.



Upcoming BECHS Events
Please mark your calendar and join us.

May-Sept 1:00-4:00 P.M.
R. D. Hubbard House
Open for walk-in visits every
Saturday and Sunday

Aug 1-4, 2002
Blue Earth County Fair
Garden City

Aug 10, 2002
Transportation Parade

September 5, 2002, 7:00 PM
"Crazy Quilting"
BECHS Heritage Center

September 14, 2002
Young Historians Program
"Native Americans and Culture"

Sept 17-20 2002
Travel Like Bert #9
The Conflict of the Dakota
and the Settlers

Thursday July 25, 7:00 PM
Bookbinding Program
BECHS Heritage Center

October 5, 2002, 9:00-4:00
Antique Appraisal Fair
Mankato Place
(downtown Mall)

October 11-13, 2002
History Fest
Land of Memories Park

October 12, 2002
Young Historians Program
"Pioneer Life"

Wish List

- ❖ Digital camera to use for collections documentation
- ❖ Flat bed scanner
- ❖ Helpers and appraisers for the Antique Appraisal Fair in October
- ❖ Legal and letter size file folders



Blue Earth County Historical Society
415 East Cherry Street
Mankato MN 56001

Non-Profit Org.
U.S. Postage
PAID
Mankato MN
56001
Permit No. 343

Preserving and sharing Blue Earth County's history since 1901