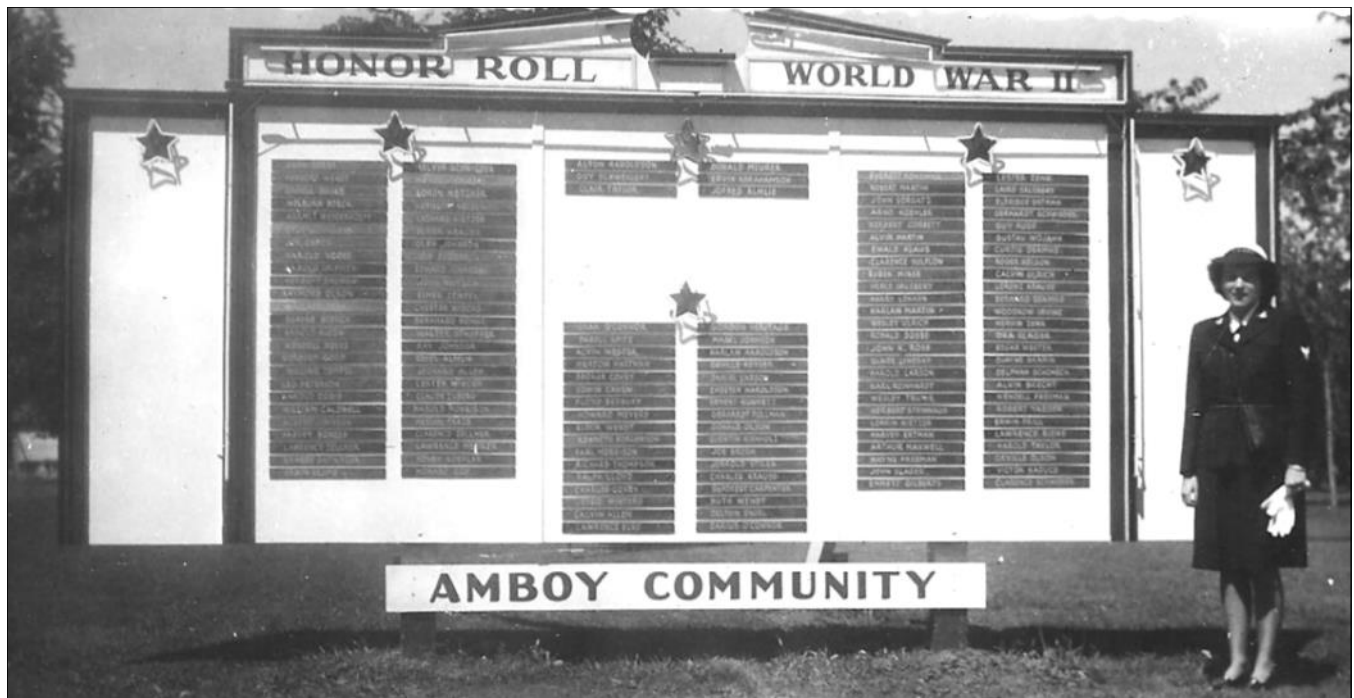


## Remembering World War II



During World War II, most Blue Earth County towns and cities proudly displayed an Honor Roll recognizing that community's servicemen and women. Photograph above: Amboy WWII Honor Roll, 1945. Read more about Blue Earth County's involvement in WWII on pages 6 and 9.

### Expansion Update



New awning at the new entrance.  
Building update on page 3.

### Surrounded By History



### SAVE THE DATE

Friday, March 20, 2015, 6 p.m.  
Reserve your tickets today!

### In this issue:

- President's Report 2
- Gift Shop & Art Gallery 4
- Hubbard House 5
- Collections & Exhibits 6
- Every Object Has a Story 7
- Women Answer the Call of Duty During WWII 9
- Research Center 13
- Volunteer Opportunities 14
- Around Blue Earth County 18
- Calendar of Events 19

**BECHS Mission:** To lead in the collecting and promoting of Blue Earth County's history to ensure its preservation for the enrichment and benefit of present and future generations.

## The Blue Earth County Historian



### Board of Trustees

President, Randy Zellmer, North Mankato  
Vice President, Shirley Piepho, Skyline  
Secretary, Sandi Garlow, Mapleton  
Treasurer, Ky Battern, Mankato  
Patrick Baker, Mankato  
Dale Benefield, Lake Crystal  
Jessica Beyer, Mankato  
Preston Doyle, Mankato  
Wendy Greiner, Mankato  
Jim Gullickson, North Mankato  
Susan Hynes, Mankato  
Mike Lagerquist, Mankato  
William Steil, Mankato  
Marnie Werner, Mankato

### Staff

Jessica Potter, Executive Director  
bechs@hickorytech.net  
Danelle Erickson, Museum Manager  
bechsms@hickorytech.net  
Heather Harren, Education & Outreach Mgr.  
bechshh@hickorytech.net  
Shelley Harrison, Archives & Collections Mgr.  
bechsam@hickorytech.net  
Ryan Harren, Hubbard House Assistant

### History Center & Museum

424 Warren Street, Mankato, MN  
(New Main Entrance)  
507-345-5566  
www.bechshistory.com  
Tuesday and Friday 9 a.m. - 5 p.m.  
Saturday 10 a.m. - 4 p.m.

### R.D. Hubbard House

606 South Broad Street, Mankato  
507-345-4154  
**Hours**  
Closed for Regular Tour Season  
Opens May 2, 2015

### *The Blue Earth County Historian*

Winter 2015

The Blue Earth County Historian is published quarterly for the members of Blue Earth County Historical Society.

Copyright: *Historian* copyright 2015 by the Blue Earth County Historical Society. All rights reserved. Reproduction of any material from this issue is expressly forbidden without permission of the publisher.

## Board of Trustees



Randy Zellmer  
President, Board of Trustees

As I look back on 2014, I realize what an exciting and opportunistic year it was for the Blue Earth County Historical Society. The departure of VINE made the entire Heritage Building available to BECHS. With this acquisition came a new entrance with an open and expanded Gift Shop and the new Marian Anderson gallery. There was the addition of several new meeting/conference rooms and the open space for presentations and traveling historical exhibits.

I would also like to acknowledge each of you who contributed your time, talent and money to BECHS in 2014. It is through your generosity that BECHS continues as a viable and growing organization. The year-end campaign was the most successful to date, raising over \$24,000. These funds are earmarked for operations and capital improvements to the building.

As we enter 2015, I encourage those who have been active to continue and encourage more members to become active by volunteering your time and talent. BECHS is currently accepting nominations for new Board Members. If you have an interest in serving on the Board, please contact a current Board Member or Jessica. The most important characteristic for a Board Member is being willing to serve and share their talents to help this organization grow. There is always room for those who want to play an active role in the advancement of the organization. Board applications can be found online at [www.bechshistory.com](http://www.bechshistory.com) or see page 17 for more information.

Join us on Sunday, March 1 at 2 p.m. for the Annual Meeting. We will introduce new Board member candidates and give an update on the organization including a look at our facility improvement plan for 2015 and beyond.

The 2015 Surrounded By History event is scheduled for March 20, 2015 at which the companies that built Blue Earth County will be recognized. This is BECHS largest fundraising event of the year. I encourage you to join us at this annual fundraiser to be held at the Minnesota State University, Mankato Centennial Student Ballroom. This is a night to socialize with members and guests while enjoying historical pictures and memorabilia. Please consider being a sponsor, donating to the silent auction and attending the event.



# Director's Notes: A Look at the Year Ahead

Jessica Potter, Executive Director

This column is my quarterly reflection of what we have done and what we are looking forward to in the future. I am so proud of all that we accomplished in 2014 with the building expansion. Attendance for August - December was up 20% higher than the same period in 2013. I think we can safely say that is due to all of the changes and the popularity of the traveling exhibits that now occupy our great new space. Another great addition is the new and improved Gift Shop and Marian Anderson Art Gallery. On a regular basis I hear people comment on how inviting that space is. In fact, store sales were up 10% over 2013. Wow, look what we've done in four months, imagine what we can do this year.

We have many building projects planned for 2015. The biggest one is the relocation of the Research Center. There will be a lot of moving of furniture, boxes and equipment in our near future. The plan is to relocate the Research Center back to its original location, which works better with the new building layout. However, before we can do that, we need to replace the carpet, paint and install a new entrance which will give Research Center staff better sightlines of the hallway and create a more welcoming entrance for researchers.

This room is currently being used as the volunteer workroom, so that will be relocated as well. And Archives and Collections storage will begin the overdue process of spreading out into now open space. Did I mention that there is A LOT of moving in our future? Volunteers are always welcome; especially, people who love to organize.

On the lower level, we hope to finish updating the three meeting/program rooms with a fresh coat of paint and new, cushioned chairs for programs. Once these rooms are updated, we hope to make them available to groups, businesses, and individuals for rental, in addition to our own use. Our goal has always been to provide more space that can be used not only by us, but also by the community.

Our building "to-do list" is quite long and we hope to tackle much of it during the winter months which is typically our slower time of the year. If you

would like to help in any way (organizing, muscle, handyman projects, financially), please let me know.

Other exciting things to look forward to this year include our 4th Annual Surrounded By History, which will be held on Friday, March 20 at 6 p.m. at MSUM's Ballroom. This is our annual fundraiser which includes dinner, live and silent auctions, and a celebration of Blue Earth County's past and BECHS' future. Everyone always has a great time. This year our theme is "Built in Blue Earth County" and our presenting sponsor is I+S Group. There is still time for your business to become an event or table sponsor. Tickets will be on sale February 1.

We are also looking forward to three traveling exhibits this year, a new book club for young adults, expanding our education programs to area schools and continuing to develop great programming for different audiences. Thank you for the many ways each of you support BECHS. Your gifts of time and financial support make all of this possible.

## BUILDING EXPANSION WISH LIST

Want to make your mark on history? Consider a donation to the BECHS Building Fund or support a specific project detailed below:

\$2,500 to upgrade two microfilm reader/printers from 1989 models to 2014 models (balance remaining after a grant)

\$4,000 for 50 cushioned meeting room chairs

\$10,500 for Facility Conditions Assessment, Feasibility Study and Schematic Drawings - to help us prioritize and evaluate necessary repairs.

\$20,000 for renovations to the new Research Center and Volunteer Workroom including: new hallway entrance, carpet and paint.

Check out [www.bechshistory.com/blog](http://www.bechshistory.com/blog) for regular updates and items added to the wish list. See our item wish list on page 17. Thank you to all who have supported the Building Fund so far.



# Gift Shop & Art Gallery News

Danelle Erickson, Museum Manager

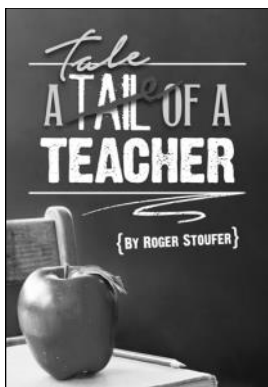
## New in the Gift Shop

BECHS is excited to be a part of *The Free Press*' latest book, *Historic Front Pages, 1857-2014*. This "coffee table" book includes copies of historic front pages as *The Free Press* covered local, national and worldwide events. A portion of the proceeds benefits BECHS. Copies can be purchased in the Gift Shop.



Hardcover, 160 pages,  
\$39.95

Did you have that one teacher that really stood out as a favorite for you and your peers? For many Mankato students, that teacher was Roger Stoufer. In his book, *A Tale of a Teacher*, Stoufer shares many personal accounts from 40 years in education including 30 years as an English teacher in Mankato. Stoufer, a BECHS member, donated a number of copies of his book to the Gift Shop to raise funds for BECHS.



Softcover, 279 pages,  
\$15.00

Fans of Maud Hart Lovelace will be happy to learn *Collected Stories of Maud Hart*

*Lovelace and Delos Lovelace, Volume 2* is now available. Edited by local author Julie A. Schrader, this book includes 18 short stories that Maud and Delos wrote together along with illustrations and cover art from when the stories were first published.

Over the past few months, the Gift Shop has added several other books written by local authors which include:

*The Angels I Hold in my Arms: Hospice Vignettes and Visions of Nancy Schwichtenberg* as told to Barbara Jackman

*A Country Doctor Goes to War* by Tamara Thayer

*Feisty Lydia: Memoirs of a German War Bride* by Edna Thayer

*A Place of Interest: One Family's Journey to the Farmlands of Minnesota* by Carolyn Van Loh

*Reconciliation with War: A Family Journey, From WWII Heroism to PTSD and Transformation* by Janelle Kaye and Charles Sidney Willsher

*The Sea Wing Disaster: Tragedy on Lake Pepin* by Frederick L. Johnson

These books and many more are available at the History Center Gift Shop and online at [www.bechshistory.com/shop](http://www.bechshistory.com/shop).

## Stop by the History Center and see the Marian Anderson Art Gallery!

After painting *Sacagawea*, Marian Anderson wrote, "I feel that this painting may be the masterpiece of my career." In the painting, Marian shows Sacagawea, the famous guide for the Lewis and Clark Expedition, generously giving her beaded belt to Captain Clark to use for trade.

You can view a color image of this print at [www.MarianAnderson.com](http://www.MarianAnderson.com), or better yet, stop by the Marian Anderson Art Gallery and see this beautiful print for yourself. Framed prints are available starting at \$310; unframed prints for \$125.

In addition to *Sacagawea*, Marian did other paintings featuring Native Americans including her *Seasons of Life* series, *Spirit of the Pipe* and *The Crossing*.



## BECHS Needs You!

Saturday volunteers needed for special events, programs, the Gift Shop and Research Center.

See page 14 for more information. Please contact Danelle at 507-345-5566 if interested.



## Historic R.D. Hubbard House

Ryan Harren, Hubbard House Assistant

Now that Christmas has passed, the Hubbard House is again closed for the season. This year's Victorian Christmas celebration was a success with 90 visitors on December 6 and 7, and about 20 more over the next two weeks. As always, visitors enjoyed getting a chance to see the



The Hubbard family, their servants, and some uninvited guests entertained the crowds at this year's "Christmas at Hubbard House."

Hubbard House at night and they appreciated listening to the new characters in the house and hearing the tales they told.



Christmas guests were entertained by "Mary Esther" and her friends singing and playing music in the parlor.

Special thanks to all the people who volunteered their time and talents at the Hubbard House this season. Our living history characters help to bring the mansion to life. The Historic R. D. Hubbard House is now closed until Saturday, May 2. The 6<sup>th</sup> Annual Victorian Tea Party will be held the first weekend in May, watch for more details to come. The Hubbard House is always in need of volunteer tour guides to lead tours during the week. Last year we had a large number of group and school field trip tours. Costumes are optional, but the Hubbard House does have a selection of both male and female Victorian costumes. Annual tour guide training will take place April 7 or 9. If you are interested in being a tour guide, please contact Danelle.

## SURROUNDED BY HISTORY

Built in Blue Earth County

DINNER • PROGRAM • LIVE AND SILENT AUCTIONS

**FRIDAY, MARCH 20, 2015**

6:00 p.m.

Centennial Student Union Ballroom  
Minnesota State University,  
Mankato

**\$50 per person**

\$30 of each ticket is a  
tax deductible donation.

Presenting Sponsor:

**I+S Group**



For reservations,  
please call  
507-345-5566.



**BLUE EARTH COUNTY HISTORICAL SOCIETY**  
[www.bechshistory.com](http://www.bechshistory.com)

### *You can help make Surrounded By History a Success!*

**Now accepting items for the  
Surrounded By History live  
and silent auctions, and  
wine raffle.**



- Popular auction items include gift certificates, tickets, gift baskets, and unique items.
- Wine can be red or white; must be valued at \$10 or more.

*Items can be dropped off at the History Center during regular business hours until March 14th. Donations may be considered tax-deductible.*

**Questions? Call 507-345-5566**



# Collections & Exhibits

## “Minnesota Homefront, World War II”

Shelley Harrison, Archives & Collections Manager

While World War II took place in the far corners of the globe, the war was also felt right here at home. The Blue Earth County Historical Society is thrilled to be hosting our next Minnesota State Historical Society Traveling Exhibit: “Minnesota Homefront, World War II” opening in February.

Through a wealth of photographs, artifacts and first-hand accounts, “Minnesota Homefront” chronicles life in Minnesota and Blue Earth County during WWII. Visitors will see how life changed significantly for Minnesota communities after the bombing of Pearl Harbor on December 7, 1941, and the subsequent declaration of war by President Roosevelt. Young men were drafted into service while others volunteered. Blue Earth County had nine brave men serving in Pearl Harbor on "a date which will live in infamy." In addition to these exhibit panels, we also will display original archival materials from our collection including photographs, letters and other artifacts to connect these moving personal stories about the war.

The exhibit invites visitors to see how everyone pitched in and did their part here at home to help the war effort from war bonds and Victory Gardens to



blackout sirens and scrap drives. School children participated in the war effort by holding drives to collect paper, scrap metal and even foil gum wrappers. It was said that one flatiron would make two steel helmets. In 1943 Pemberton was declared the winner for having the highest per capita scrap collection for any community in the

county; they collected 208,000 pounds of metal with a population of 135.

Many Minnesotans, men and women, learned a new way of life in support of the war effort as they went to work in factories that produced war

materials. Some local war manufacturers included Little Giant Co., Kato Engineering, Truth Tools, Lake Fish Canning Company and Aemco.

Few families were untouched by the War. Almost every family had a service flag hanging in the front window. The flags had a deep blue star for each living member in the service; a flag contained a gold star for every man or woman who was killed on active duty. The service flag was introduced during World War I. It was considered a mark of pride when a family member served in the Armed Forces; a sentiment that continues today.

This exhibit tells these tales through images that captured the everyday of those who stayed behind and fought the war from here. It's a personal look at the people who made great sacrifices to support the war effort and shows the impact of the war at home in our communities. “Minnesota Homefront, World War II” opens February 14, and runs through June 20, 2015.

## Minnesota Homefront

A traveling exhibit from the Minnesota History Center.

DURING WORLD WAR II, our nation's armed forces had a powerful ally — the citizens back home. Learn how ordinary Minnesotans worked and sacrificed to do their part for the war effort.

**Don't miss it—**

**Feb. 14 - June 20, 2015**

**Blue Earth County History Center & Museum**

**Free**



The statewide tour of this exhibit is made possible with funds from the Arts and Cultural Heritage Fund of the Legacy Amendment, created through the vote of Minnesotans on Nov. 4, 2008.

# Every object has a story...

The Society's permanent collection includes paintings, textiles, posters, photographs, books, letters and ephemera from the middle of the 19th century through the 21st century. Photographs bring back to life a specific moment in time. Each photo is like a mini time machine! Here is a glimpse into our photograph collection.



Tom Mix and Ernest Schloeman in Mankato, MN, 1930s. Schloeman owned the Riverview Steak Farm west of Mankato. Tom Mix was a popular cowboy movie star.



Bob Hope at Farmfest USA in Vernon Center, MN, 1972. Were you there?

If you are interested in donating a photograph or a piece of Blue Earth County history, please contact Shelley Harrison, Archives Manager.

## HISTORY CENTER ART GALLERY

Due to our expansion projects, the History Center Art Gallery, that features local artists, is taking a short break. We are currently in the process of setting up the new Art Gallery.

Since 2010, the Historical Society has hosted 16 local artists shows. Each show has been different. Some were solo artists, some were clubs and some were a collaboration. We hope to continue this community project in the near future. Watch for information to be announced.

### **Call for Artists**

We are accepting proposals from local artists to be featured in the History Center Art Gallery. Exhibits run for three months. All art mediums will be considered including photography, wall sculpture, fabric, mixed media, paintings and drawings. Work must be able to be hung on a wall and must be family friendly to be considered. For more information or for an application please contact Shelley at 345-5566 or [bechsam@hickorytech.net](mailto:bechsam@hickorytech.net).

*Marian Anderson*  
**Fine Art Prints**

### **SPECIAL MUSEUM EDITION**

Marian Anderson's Historic Mankato Series is now available in a Limited Museum Edition. This sold out series is back with a limited quantity for a limited time only. All proceeds benefit BECHS's expansion. Get yours before they are gone!



**Historic Mankato Series includes *Closing Time*, *Good Ol' Summertime* and *Partners in Progress***

Set of all three historic Mankato scenes \$500  
or sold individually for \$200 each

**Visit [www.MarianAnderson.com](http://www.MarianAnderson.com)**



# Education & Outreach

*Making Local History Accessible to All Ages*

Heather Harren, Education and Outreach Manager

Throughout the past year, the Education Taskforce has met to develop ideas on how to promote local history to our area youth. We have three main areas that we are working on: an enhanced school field trip tour for the Hubbard House and Museum, classroom activities or kits, and a learning lab in the museum.

Our activities are based on the recently updated Minnesota Social Studies Standards. We are developing ways for classroom teachers to utilize the resources at BECHS while still meeting these new standards. Once we have some prototype programs, we will share them with area teachers for feedback.

We plan to utilize the enhanced school field trip tours this spring and hope to have the classroom components ready by fall. We need volunteers to help in many aspects of this initiative, such as developing classroom materials and kits, serving as field trip tour guides starting in April, and volunteering in classrooms starting next fall.

The museum learning lab is in its early development. We would like to develop a hands-on family friendly space that will appeal to pre-K through elementary age children in the old gift shop.

BECHS is seeking individuals interested in serving on the Education Taskforce. Early childhood and elementary education backgrounds encouraged. Please contact Heather for more information.

## Maud Hart Lovelace Young Readers Book Club

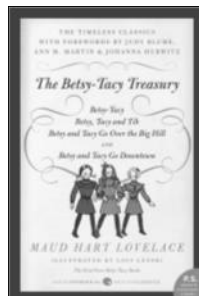
**What:** Book Club and Discussion of *The Betsy-Tacy Treasury*

**Who:** Youth ages 9-12

**When:** 2nd Saturday of each month  
January-May, 1-3 p.m.

**Where:** BECHS History Center

**How:** Participants must complete an application form. There's still time to join in February. Program details, benefits and application available at:  
[www.bechshistory.com/book-club](http://www.bechshistory.com/book-club)



## Monthly Educational Programs

### Our History Matters

Monthly educational series promoting and celebrating local history. Free for BECHS Members, \$5 Non-members.



Arn Kind from the Boy in Blue Civil War Stories at November's Our History Matters.

### Upcoming Programs

**January 22** – Connor Oldenburg presents the historic case Anti-Monopoly vs. General Mills Fun Group

**February 26** – WWII and the Homefront by Arn Kind

**March 26** – What Your Ancestor's Wore by Grace Keir, Textile Historian

**April 23** – To Be Announced

## Young Historians

Monthly, free, hands-on history workshops for school-age children, 2nd Saturday of each month, September thru May, 10 a.m. to Noon. This year's schedule will explore technology from the Progressive Era of the 1870s to the modern age. In between, we will explore Ellis Island, World War I, Great Depression and World War II. The full 2014-2015 schedule can be found online at [www.bechshistory.com/programs/young-historians](http://www.bechshistory.com/programs/young-historians).



Young Historians toured the "Uncle Sam's New Deal" exhibit December.

### Upcoming Workshops

**February 14** - America's involvement in WWII

**March 14** - Homefront during WWII

**April 11** - Technology Advances 1950s-Present

**May 9** - Tour of the History Center & Museum



# Blue Earth County Women Answer the Call of Duty During World War II

By Grace Webb

When the Japanese bombed Pearl Harbor on December 7, 1941, the United States was plunged into World War II. For the next three years, America sent troops everywhere from Japan to Germany to Australia, fighting battles on all fronts until the final surrender documents were signed by the Axis powers on September 2, 1945. During this time, filled with sacrifice and bravery, Americans found countless ways to serve their country—and it wasn't just the men. American women did everything from join the military to construct air craft carriers to volunteer with the Red Cross and more. Read on to learn more about how Blue Earth County women used their skills and resources to support the war effort.



About 160 women went to work for the Automatic Electric Manufacturing Company to help the war effort in the 1940s.

## Girls with Star-spangled Hearts

More than 12 million Americans served in the military in some way during World War II, with millions being drafted and millions more signing up voluntarily. While U.S. women were exempt from the draft, that didn't stop them from volunteering to serve their country. They had several options, from joining auxiliary branches of the military to serving in the military as civilians.

Most women who wanted to serve in the military volunteered in the Women's Army Auxiliary Corps (WAAC), which was created on May 15, 1942 for women to support the U.S. Army. In 1943, this was changed to the Women's Army Corps which served as an official branch of the U.S. Army. WAC members received training at military bases and went on to serve across the world in various positions, from serving as decoders to working as administrative assistants. About 150,000 women served with the WAC during the war, becoming the first women other than nurses to serve in the U.S. Army. In Blue Earth County, more than 45 women volunteered to become WACs during World War II.

Mapleton resident Ellen M. Van Rossum (nee Lehman) was one of these women, joining on March 3, 1943 and serving for 33 months. While she was in the service, she was sent overseas to serve in the European-African-Middle Eastern theater, earning the WAAC service medal, the American Campaign medal, the World War II victory medal, a good conduct medal and a medal for her time in the European-African-Middle Eastern campaign. She left the service as a Corporal.

Another Blue Earth County woman who joined the WAC was Phyllis Brine (nee Blow), joining the service in 1944 and serving until 1946. She started as a company clerk and eventually became the First Sergeant of a company stationed at an Air Force base in California. Ironically, Brine never set foot on base because, as she explained, "It wasn't allowed to mix the men and the women." Later, she was sent to France, where she was First Sergeant of a company stationed in Paris that decoded messages. There, she met American soldier Robert Brine, whom she eventually married.

There were several other options for women wanting to serve in the military during World War II, from the Coast Guard's Women Reserves (SPAR) to the Women Air Force Service Pilots (WASP). In Blue Earth County, at least 100 women joined the Navy WAVES (Women Accepted for Voluntary Emergency Service) including Pemberton resident Eileen Adams. She was one of five siblings that joined the military during World War II, enlisting as a WAVE in 1944. Adams served as a Navy yeoman during her time stationed at a

naval base in Corpus Christi, Texas, before her discharge in 1946. During her time in the service, she earned both the American Theater Ribbon and the Victory Medal.

Mankato resident Bernadine Balkwill also joined the WAVES, training at an aircraft gunnery training program in Illinois in 1944. Meanwhile Mapleton resident Ida DeMario (nee Keller) joined the service that same year, serving in California until her discharge as a yeoman second class in 1946.

### The Army Nurse Corps

Another way that women served in the military was by joining the Army Nurse Corps, which is one of the six branches that make up the Army Medical Department. Established in 1901, the Army Nurse Corps saw nearly 60,000 women join its ranks during World War II, serving everywhere from the United States to Europe to Japan to Australia.

Several women from Blue Earth County joined the Army Nurse Corps, including Pemberton resident Kathryn Lorraine Murphy (nee Adams). Murphy was the sister of WAVE Eileen Adams. She enlisted with the Army Nurse Corps on January 10, 1944 after graduating from St. Joseph Mercy Hospital as a registered nurse. She served overseas in both the European and the Pacific theaters, and in September of 1945 she was among the first group of Army nurses to reach Tokyo Bay, arriving with the USS Marigold, an Army hospital ship. By the time she was discharged in January 1946, she had reached the rank of First Lieutenant, earned a Philippine Liberation



Kathryn Lorraine Adams Murphy's Army Nurse Corps Uniform

Ribbon with one bronze star, a Pacific ribbon with three bronze stars, a European ribbon with two bronze stars, a meritorious unit award and an American theater medal.

Christine Tacheny (nee Schneider) was another young woman who joined the Army Nurse Corps after working as a registered nurse at St. Joseph's Hospital in Mankato and St. Mary's Hospital in Duluth. She enlisted in February 1944 and served

until February 1946, reaching the rank of First Lieutenant. She served in several locations, including Frankfurt, Germany, during her two years in the service and earned several service bars and medals. "I enlisted to help," she later explained, adding that she was glad to serve despite seeing the destruction and loss of lives caused by the war.

Hazel Hess (nee Oftedahl), Pemberton resident, trained to be a nurse at St. Mary's Hospital in Rochester. She enlisted in the Army Nurse Corps in 1942 and served for 44 months in Australia, New Guinea and the Philippines. When she was discharged in 1945, she held the rank of Captain. Hess received the Asiatic-Pacific ribbon with one Battle Star and a Unit Citation for her service.



Hazel Oftedahl Hess

### A Real Need

Many other women also worked as nurses outside the military realm by joining the American Red Cross. During the war, more than 7.5 million people volunteered with this organization, while the American public raised more than \$784 million in support for its efforts. Volunteers provided comfort and aid to service members and their families, both in war zones and at home. In fact, according to redcross.org, by the end of the war, "nearly every family in America contained a member who had either served as a Red Cross volunteer, made contributions of money or blood, or was a recipient of Red Cross services."

While the organization was created in 1881, it wasn't until 1917 that the Mankato chapter was formed by George Palmer of the Hubbard Milling Company, who also acted as the chapter's first chairman. When World War II was declared, several women from Blue Earth County volunteered with the organization.

One of the most prominent women from Blue Earth County to work for the Red Cross during World War II was Louise Wood, a Mankato resident who served as director of Red Cross servicemen's clubs in several overseas locations. These clubs were created as places for servicemen to recharge after grueling times of service, offering places to play games, write letters, and much more. In 1942, Wood



Louise Wood

was named Assistant National Director for Club Services of the American Red Cross, headquartered in Washington D.C. Two months later she was reassigned to England as Assistant to the Director of the Red Cross Clubs for American Soldiers in the British Isles. In April 1943, she became Director of Club Services in North Africa followed by operations in the Mediterranean based in Italy. In 1946, she was named Director of Club Operations for the European Theater, headquartered in Germany. Wood eventually became the National Director for Overseas Activities for the Red Cross. She received several honors, including the Medal of Freedom from President Truman in 1947 and the Italian Medal of Freedom in 1948.

Several other Blue Earth County women also volunteered with the Red Cross. Some were sent overseas, such as Mankato High School graduate Margaret Donahue, who worked as a staff assistant in England starting in 1944, and Mary Taggart, who worked in New Guinea during the war before coming back to Mankato to teach at Mankato State College. Others served in the U.S. including Mary Lou Boman and Marilyn Piccione (nee Radichel), who both worked with wounded veterans in Texas.

Many women volunteered with the Red Cross without ever leaving Blue Earth County. Thousands of women helped by working in hospitals, collecting scrap metal, raising funds, growing victory gardens, knitting sweaters and more. From 1940-1945, hundreds of victory gardens were planted in Blue Earth County, and more than 35,000 pounds of tin cans were collected in the area, according to an article in the *Mankato Free Press*.

### They Could Do It

As thousands of men left the workforce to serve in the military, women stepped up to keep factories running. For the first time in the country's history, women were encouraged by the government to leave their homes for full-time jobs, doing everything from assembling war ships to working in munition factories. "Rosie the Riveter" became an iconic symbol of the female worker as the percentage of women in the U.S. workforce jumped from 27 percent to nearly 37 percent between 1940 and 1945,

according to the American History Channel. In fact, by the end of the war, nearly one out of every four married women worked outside the home, with more than 7 million working in some sort of industry.

Women in Blue Earth County were among the hundreds of thousands who stepped up to take on

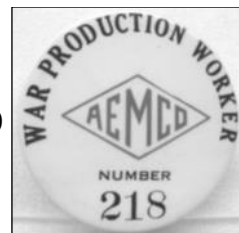


Women at the Automatic Electric Manufacturing Company, 1940s

even more responsibilities during the war. About 160 women went to work at the Automatic Electric Manufacturing Company, a Mankato defense plant founded in 1918 that started manufacturing war supplies in 1942. Most of its work was focused on manufacturing relays for transmitters, receivers and tuning devices used in landing craft and airplane radios, but company workers also produced time

control devices and reverse current cutouts for electric light generators.

In 1945, the company was presented with the Navy "E" flag by then-Secretary of the Navy James V. Forrestal. This flag was awarded to only a few defense plants every month during the war for "outstanding production of war materials" and was based on a list of more than 40 stiff requirements. The company was then able to fly the Navy "E" flag at its building.



"[This award] shows that employers, employees and the army and navy officials have worked together most successfully," said Rex Hill, then-president of the Mankato Chamber of Commerce. "This firm is to be especially commended on its winning this award because it means they have made a distinct contribution toward the winning of the war through the high quality of the products they have manufactured, and the speed with which they have produced them."

Meanwhile, other women went to work at the Lake Fish Canning Company which was established in 1944. The company processed and canned freshwater carp for the U.S. government to ship overseas to feed military and civilians in Europe. This interesting local story is the topic of the BECHS

publication *The Multifaceted Carp* by Henry Quade available online and in the Gift Shop.

Blue Earth County companies were involved in the war effort in other ways as well. Some donated supplies to send overseas, such as the Pepsi Cola company of Mankato, which sent over nearly 3,800 pounds of tin cans during one support drive, and the Coco Cola Bottling company of Mankato, which contributed another 4,900 pounds to the same drive. Meanwhile, the Continental Can Company donated all the supplies to plant new batches of victory gardens, contributing everything from the seed to the gardening tools.

### A Grand Legacy

For the five years that Americans were actively involved in World War II, women played a vital role in the war effort. Whether they were serving in the armed forces, volunteering with support organizations such as the Red Cross, producing war supplies in thousands of factories, growing victory gardens or collecting scrap metal, every woman contributed to the eventual Allied victory.

President Franklin Delano Roosevelt addressed women's wartime contributions when he said, "They have given their sons to the military services. They have stoked the furnaces and hurried the factory wheels. They have made the planes and welded the tanks, riveted the ships and rolled the shells."

Every woman sacrificed, every woman struggled, every woman served—and every woman deserves our thanks and remembrance.

### Sources

Blue Earth County Historical Society Vertical Files including the *Mankato Free Press*

History.com, "American Women in World War II"

RedCross.org, "World War II and the American Red Cross"

Tacheny, Christine. Blue Earth County Answers the Call, Veteran's Biographical Data Form.

U.S. Army Center Of Military History, [www.history.army.mil](http://www.history.army.mil), "The Army Nurse Corps"

"World War II Blue Earth County Veterans," compiled by Jo Schultz

## Are you a veteran? Was a family member? BECHS Needs You!

For many years, the Historical Society has been collecting Veteran's Biographical Data forms for all Blue Earth County veterans of all conflicts. In addition, we are seeking photographs documenting service as well as homefront efforts. Veteran's

Biographical Data forms can be found at the History Center or online at [www.bechshistory.com/research/stories](http://www.bechshistory.com/research/stories). Have you completed yours? If you would like to donate a photograph or item to the collection, please contact Shelley.



Library of Congress

THE BLUE EARTH COUNTY HISTORICAL SOCIETY INVITES YOU TO THE

## 2015 Annual Meeting

**Sunday, March 1, 2015 @ 2:00 p.m.**

**BECHS History Center**  
424 Warren Street, Mankato

**State-of-the-Society  
Member's Business Meeting**  
including building expansion updates

**Program will be a historical  
look back at the 1965 Flood**

**History Center & Museum opens at 1 p.m.**

Please RSVP by February 28  
to 507-345-5566 or [bechsms@hickorytech.net](mailto:bechsms@hickorytech.net)

Preserve Our Past, Protect Our Future



# Around the Research Center

Heather Harren, Education and Outreach Manager

This year is going to be a great year. In the next few weeks, BECHS will begin work on the new Research Center. Moving the Research Center back to the end of the hallway will put it in a central location for people when they come to the new Warren Street main entrance. Moving the Research Center will also give us more room for resources as well as quicker access to materials located in the back archives, such as photographs and wills.

More space is much needed. BECHS has over 1,700 subject files and over 1,000 biography files and the filing cabinets are full. As volunteers continue to clip local newspapers on a daily basis, these files continue to grow and more cabinets are needed.

BECHS has 107 obituary books with #108 in progress. This resource has become a valuable tool used by most people who use the Research Center. As these books grow, we continue to need more shelf space for them.

In addition to the obituary books, there are 40 binders of social notes and six binders for our cemetery index. The city directories date back to the 1870s and span through 2000. BECHS has three different history books in binders as well as other



resources that all take up a lot of shelf space.

If you would like to help move boxes, cabinets, or resources in the next few months, contact Danelle and let her know that you are interested in volunteering. In addition, we are seeking financial support to make improvements to the new Research Center possible. If you would like to know more about what is needed, please contact Jessica or see page 3 for more information.

Watch for an announcement in the next few months about the opening of the new Research Center.

## Here's a little Blue Earth County trivia from the Research Center:

1. What year was the first payphone installed in Mankato?
2. What is the oldest running restaurant in Mankato?
3. What year was Minneopa State Park designated as a state park?

Answers can be found on page 19. Like Blue Earth County trivia? More can be found on our website and Facebook page.

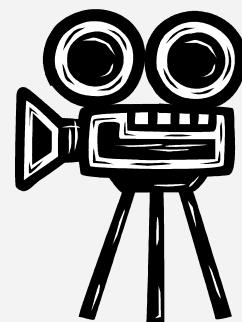
## Support BECHS on AmazonSmile

You can support BECHS by shopping through AmazonSmile when you do your Amazon shopping. Visit [www.smile.amazon.com](http://www.smile.amazon.com), login to your Amazon account and enter "Blue Earth County Historical Society" as your charity of choice to get started! It's that simple and next time you shop on Amazon, you will be supporting BECHS while you shop.



## Wanted: Your BECHS Story

You may have seen one of our "Volunteer Story" or "Member Story" videos on Facebook or YouTube. We are looking for more people to share their BECHS story. Tell us why you joined or started volunteering at BECHS, what you enjoy the most about BECHS or maybe you have a specific story or memory to share. The videos are informal and can be as long or short as you would like. If you are interested in sharing your BECHS story, please contact Heather. To view our current videos, visit [www.bechshistory.com](http://www.bechshistory.com) and click on the "Community" tab.





# BECHS Volunteers Make History Happen

BECHS Volunteers provided over 7,000 hours of their time volunteering for BECHS in 2014! Thank you to everyone who gave their time at BECHS events, in our research and collections and with our expansion. You really do make history happen!

Below you will find some volunteer opportunities. If you are interested in helping with any of these opportunities or would like more information about volunteering with BECHS, please contact Danelle, our volunteer coordinator, at [bechsms@hickorytech.net](mailto:bechsms@hickorytech.net) or visit [www.bechshistory.com/volunteer](http://www.bechshistory.com/volunteer).



30 volunteers attended the Annual Volunteer Christmas potluck in December. Save the date for the Annual Volunteer Appreciation on April 13.

## Volunteer Opportunities

### **Seeking New BECHS Board Members**

BECHS is looking for individuals to join our Board of Trustees to serve from March 2015- March 2018. For more information, see page 17.

### **Tour Guides**

Seeking individuals interested in leading tours of the Hubbard House and History Center. If you are interested in giving tours, please let BECHS know so we can contact you with further information about upcoming tour guide training to be held in April.

### **Research Center Assistant**

Do you enjoy researching family or local history? Do you like helping people learn about the past? BECHS is looking for people to help in the Research Center, assisting visitors and fulfilling research requests. Training is provided, however research experience is preferred.

### **Gift Shop Help**

With the new Gift Shop location, there may be times when BECHS needs an additional hand in the gift shop. Duties include greeting visitors, answering basic questions about BECHS and assisting in the gift shop. Must be comfortable with computers.

### **Building Projects**

There are still a variety of expansion related projects needing volunteers like handyman/light construction, moving and reorganizing.

### **Writers and Editors**

BECHS is looking for writers and researchers for history based articles to be used in a variety of places including local newspaper articles and BECHS publications. Articles need to feature Blue Earth County history and use research materials available in the Research Center. BECHS is also seeking individuals strong in editing and proofreading. Schedule is flexible.

### **"This Day in Blue Earth County" Researcher**

Looking for someone to research past Blue Earth County newspapers, looking for interesting tidbits that BECHS can share on social media.

### **Scanning Project**

Looking for someone interested in assisting with a long-term scanning project of photos, slides, negatives and documents. Must be comfortable working with computers and scanning equipment. Training provided.

### **Data Entry**

Seeking an individual interested in entering manuscript information into a database.

### **Education Taskforce**

Assist with the development and implementation of local history teaching tools for early childhood through elementary-aged children.

# BECHS Donations

October - December 2014

## Donations

Margaret Anderson Kelliher  
Pete and Cindi Baker  
Penny Banwart  
William Bassett  
Dale Benefield  
William & Marilyn Bessler  
Jessie Beyer & Kurt Klinder  
Darwin Blume  
John and Karen Boubel  
Catherine Brennan  
Lonnie & Catherine Bristol  
Susan and Bob Brown  
Burkhardt & Burkhardt  
Laura Busch  
Marilyn Buscher  
Drew and Dawn Campbell  
Benjamin Jerome Carey  
Eleanor Caven  
David Christensen & Jill  
Evans  
Barbara Church  
David and Carolyn Clause  
Ogden Confer  
David Cowan  
Nancy Craig  
JoLynn Crowe  
Crystal Valley Co-op  
Joseph Dobie  
Mary Dooley  
Preston Doyle  
Aileen Eick  
John Ellis  
David and Julie Ewert  
Joe and Malda Farnham  
Susie Farnsworth  
William Fasnacht  
John Fitzloff  
Joan & Dennis Fredericksen  
Kenneth Freie  
John and Peg Ganey  
Audrey Gatchell  
Jane Griffiths  
Jim & Shannon Gullickson  
Scott Haefner  
Tom Hagen  
Dennis Hagen  
Richard & Nancy Hamer  
Heather Harren  
Karen Havelka

Norla Hesse  
Marla Sugden  
Higginbotham  
Shirley Higginbotham  
Char Hiniker  
William Hoehn  
Pat and Jim Hoehn  
Alice Hollingsworth  
Don Howard  
Bob and Geri Howieson  
Katherine Hughes  
Susan Hynes  
John Isch  
David and Colleen Jackson  
Bill and Margaret James  
Steve Jansen  
Mary Ann Jensen  
Marlyss Johnson  
Dolores Jones  
Ellis Jones  
John Just Sr.  
Linda Karow  
Jack and Harriet Kent  
Arn and Margaret Kind  
Chuck and Kait Klammer  
W. Paul Koenen  
Krengel Bros. Inc.  
Denise and Mike Kunkel  
Mike Lagerquist  
Kevin Laird  
Bud and Shirley Lawrence  
Jane Lawther and JP Flood  
Eloise and Robert Layman  
Amy and Eric Lennartson  
Coleen Lindemann  
Kay Lund  
Duncan Lutes  
Jack Madsen  
Liz and Tim Madsen  
Elizabeth Manderfeld  
Mapleton Farm & Home  
Olga Polly Marshall  
Renee Mathiason  
Kristin Matzke  
Mary McComb  
Byron & Karen McGregor  
Theresa and Tom  
McLaughlin  
Edward McLean  
Meyer Financial &

Consulting LLC  
Minnesota Welsh Assn.  
Bill and Mary Nelson  
Donna Nielsen  
Matthew Norland  
Richard & Kris Norland  
Beth Norman  
Ruth Nuessle  
Neil Nurre and Dr. Janet  
Cherrington  
Linda & Jerry Nussbaumer  
Ora Ohlenkamp  
Chris and Steve Oldenburg  
Susan and Robert Olson  
Catherine Owens  
James Pengra  
Shirley and Mark Piepho  
John Carter Piper  
Tad and Cindy Piper  
Piper Family Fund  
Leigh Pomeroy  
Jessica and Brad Potter  
Margaret & Daniel Preska  
Radio Mankato  
Richard Reisdorf and  
Georganna Kramer  
Marcia Jones Richards  
Susan Ricketts  
Carol Ries  
Joan Roca and Elaine Lilly  
Mary Jane Rosenberg  
Shirley Schaub  
Scheels All Sports  
Julie and Ken Schrader  
Jo Schultz  
Richard Schulz  
Daardi Sizemore  
Marilyn and Robert Small  
Lynette and Norbert Smith  
Brad and Alysha Smook  
Richard & Ramona Steele  
Peter and Regina Steiner  
Sigvald Svendsen  
Brett & Gretchen Taylor  
Ken & Irene Thompson  
Allen & Jane Torgerson  
Margaret Towner  
Dean and Kathleen  
Trauger  
Willard Vetter  
Howard and Mary Ward  
Donna Webb  
Marti Weisgram  
Marnie Werner

Donnette Wheelock  
Linda and Kenneth  
Wilmes  
Women Executives in  
Business  
Randy Zellmer  
Beth Zimmer

## Monthly Donors

Dale Benefield  
Joel Botten  
Carol English  
Carlienne Frisch  
Shirley Grundmeier  
Dean and Jo-an Lavitschke  
Jack and Diann McGowan  
Judie Neitge  
Donna and Jerry Webb  
Beth Zimmer

## Memorials

*In Memory of Monica  
Haack* Roberta Bartholdi

*In Memory of Frank and  
Dorothy Klugherz*  
Catherine Klugherz

*In Memory of Donald C.  
Meredith, M.D.*  
Marjorie Meredith

*In Memory of Helen  
Purscell* Roberta Bartholdi

*In Memory of Robert  
Wigley* Charlton Dietz

*In Memory of Walter  
Zellmer*  
Jo-an Lavitschke  
Bryan and Tami Paulsen  
I & S Group  
Lynette and Norbert Smith

## In-Kind

Jane Griffiths  
William Lass  
Roger and Carolyn Lovik  
Quality 1-Hr Foto  
Bonnie and Gene Sellner  
Roger and Beverly Stoufer

# Membership Makes a Difference



“What does it mean to be a BECHS member?” is a question we are sometimes asked. While it may seem like a simple question – in actuality, being a BECHS Member means different things to

different people. For some people, their membership is their annual pass to the Research Center and events. For families, it could mean free access to the museum and interactive kids’ area. Out-of-state members may join to stay connected with their roots. For members near and far, *The Historian* is a great way to learn about Blue Earth County and stay informed about BECHS’ changes, news and upcoming events.

There is one other thing that membership means for many people and that is supporting BECHS. Whatever the reason for joining, BECHS Members share an interest in history and a desire to preserve the heritage of Blue Earth County. Your membership dues and other financial gifts, provide a significant portion of the funds BECHS needs to preserve and share the memories and treasures of Blue Earth County. **THANK YOU!**

If you are not a member, please join today. Visit [www.bechshistory.com/join](http://www.bechshistory.com/join) or see the membership form on back of this issue of *The Historian*.

Member benefits include:

- a free annual pass to the History Center and Museum, Research Center, R.D. Hubbard House and more
- 10% off most items in the Gift Shop and Marian Anderson Art Gallery
- *The Historian* in your mailbox or inbox four times a year
- The knowledge that you are supporting the one organization dedicated to Blue Earth County’s history

## BECHS Membership

**October - December 2014**

### **New Members**

Mike Ballard  
Warner Beckmann  
Genette Carleton  
Dennis Eggersdorfer  
Merrill and Karen Frydendall  
Leah Hansen  
Adam and Katti Hurley  
Industrial Fabrication Services  
Kato Moving & Storage  
Sandy Kuper  
Jim Muyres  
Paape Companies, Inc.  
Jan-Louise Paterson  
Kayla Powers  
Christine Schulz  
Donald Straub  
Rhonda Taylor  
Stan Wenner  
Jenny Yates

### **Renewing Business Members**

Burkhardt & Burkhardt  
Community Bank  
Crystal Valley Co-op  
Hoehn Drainage & Excavating LLC  
Preston Doyle State Farm Insurance  
R & E Enterprises of Mankato  
Red Door Creative  
The WOW Zone

***To ALL our new and renewing members,  
THANK YOU for your continued support.***



## **Blue Earth County Historical Society Monthly Giving Program**

The Monthly Giving Program is an easy way you can help provide steady support for the ongoing work of BECHS. Enroll online or at the History Center.

Your credit or debit card will be charged automatically each month.

***[www.bechshistory.com/monthly-donations](http://www.bechshistory.com/monthly-donations).***



## 1860s BASE BALL CLUB 2015 Schedule

May 16	Columbia Heights
June 21	The Landing, Shakopee
June 13	Mankato Baltics Festival, Erlandson Park, Mankato
June 28	Lanesboro
July 12	North Mankato Fun Days
July 25	Afton
August 1	Rochester
August 2	Jordan
August 15	Reedsburg, WI
September 12	Defeat of Jesse James Days, Northfield
September 13	Farm America Fall Festival
September 19	Arlington
December 5	Arli-dazzle, Arlington

## BECHS Board of Trustees Applications Now Being Accepted

The Blue Earth County Historical Society is now accepting applications for four open seats on the Board of Trustees beginning March 2015. Monthly board meetings are held the 4<sup>th</sup> Monday of each month at 5:30 p.m. All openings are for a three-year term ending March 2018.

This is a very exciting time for BECHS with our current building expansion and future capital campaign. We need people who want to be an active part of this growth and change. The Board consists of members representing Blue Earth County and is currently seeking individuals strong in one or more of the following areas: financial management, business management, development, fundraising and facility development. Previous non-profit board experience preferred, but not required.

Applications accepted until **February 1, 2015**.  
For an application, please visit  
**[www.bechshistory.com](http://www.bechshistory.com)** or contact Jessica at  
[bechs@hickorytech.net](mailto:bechs@hickorytech.net) or 345-5566.

### WISH LIST

Here are a few items we could use.  
New or used; item or cash to  
purchase. Questions or to donate,  
contact Jessica at 345-5566.

**Auction Items**  
for Surrounded  
By History  
See page 5 for ideas

**Bottles of Wine**  
for Surrounded  
By History

**Digital Camera**  
20 megapixel,  
point-and-shoot  
with video  
capability

**1.7 cu. ft. "Dorm"**  
**Fridge**, new or  
used in good  
condition for the  
Hubbard House

**Used Printer Ink**  
**Cartridges**  
to be recycled  
for cash

**Keurig K-Cups**  
Any flavor.  
For use with the new  
Keurig 2.0 in the new  
public coffee nook.

**THANK YOU FOR  
YOUR SUPPORT!**

# Around Blue Earth County



Rapidan Heritage Society

The December tradition continued at the Rapidan Depot with a visit between Santa and friends (young and young of heart). No pressure, no stress, a bag of goodies and a picture taken with Santa – all given in the spirit of Christmas! Special thanks to Little's Tree Farm for providing a locally grown Christmas tree for the Depot.

I want to thank everyone who supported RHS during 2014 with a monetary donation, donation of a Rapidan area artifact, family/school pictures, family history or by attending one of the events sponsored by RHS. Your input and support are important to us! The Depot will open Memorial Day, 2015.

The winters were long and lonely for the original settlers in Rapidan Township. In 1876, the first Post Office was located in Olaf Olson's home, on the Milwaukee Railroad line near Rapidan Station. Mail was not delivered, but held at the post office until someone came to pick it up. In 1897 the first long distance phone line connected Rapidan, Rapidan Mills, Garden City, Vernon Center and Good Thunder, although few homes had phones.

The isolation, the howling of the wind or maybe the brilliance of the snow, unfortunately, took a toll on some of the people, especially the pioneer women who stayed at home and had little contact with others. Unusual behavior brought a visit from the sheriff, who could judge a person to be "insane" and they would be taken to the St. Peter State Hospital for the Insane for treatment.

Indeed, communication and travel has changed greatly since those early days, and for that we are thankful!



## Madison Lake Area Historical Society 2014 Annual Report

In 2014, the Madison Lake Area Historical Society celebrated its 32nd year with many interesting events. Here's a recap:

The winter and spring months were filled with talks about Slovenia and Italy, history of burial practices, a historic video of Madison Lake businesses, video on the Capitol construction and local quarries and Hardeggar Resort and Dance Hall on Lake Jefferson.

The summer was filled with presentations about a local man's experiences on Air Force One and of meeting Jackie Kennedy, history of the Immaculate Conception Church of Marysburg and cemetery, and our annual potluck with a talk about airplanes.

We finished the year exploring Black Beard the pirate, the Younger Brothers, U-Boats and World War II and our annual Christmas potluck where we learned about Christmas traditions around the world.

Looking ahead to 2015, Adam Lindquist, who resembles Teddy Roosevelt, is expected to talk about the Roosevelt Family. Del Begalka will be back and will share with the group the history of the Colt .45.

Madison Lake Area Historical Society consists of about sixty-five members. Regular meetings of the Madison Lake Area Historical Society are held at 7 p.m. on the first Wednesday of each month usually at All Saints Church Scheid Hall. All are welcome to join. Annual dues are \$10 and payable in January. Current officers of the club are Mike Peters, President; Mary Buschkowsky, Secretary; and Corrine Sprague, Treasurer. The Board of Directors consists of Bob Lamont, Laura Busch, Jim Cervin and Michael Frederick.

### ***Moving? New Address? Please let us know!***

It costs over \$2 for each returned newsletter that cannot be delivered. Please help the Society reserve funds and assure that you get your *Historian* by notifying us of your new or seasonal address.



**THRIVENT  
FINANCIAL®**

**BLUE EARTH COUNTY HISTORICAL SOCIETY  
IS A  
THRIVENT CHOICE DOLLARS®  
ENROLLED ORGANIZATION**



# Calendar of Events January - April 2015

## JANUARY

- 22 Tune in to KTOE 1420-AM** at 1 p.m. for BECHS update on Talk of the Town
- 22 Our History Matters: Anti-Monopoly vs. General Mills Fun Group**, 6 p.m., History Center, \$5 Adults, Members Free

## FEBRUARY

- 14 "Minnesota Homefront" Traveling Exhibit Opens**, 10 a.m.-1 p.m., History Center, Refreshments, Store Specials, Kid's Activity
- 14 Young Historians: America's Involvement in WWII**, 10 a.m., History Center, RSVP to 345-5566
- 14 Maud Hart Lovelace Young Adults Book Club**, 1 p.m., History Center, Must be pre-registered
- 26 Tune in to KTOE 1420-AM** at 1 p.m. for BECHS update on Talk of the Town
- 26 Our History Matters: WWII and the Homefront** by Arn Kind, 6 p.m., History Center, \$5 Adults, Members Free

## MARCH

- 1 Annual Meeting**, 2 p.m., History Center, please RSVP by 2/28/15 to 345-5566 or bechsms@hickorytech.net
- 14 Young Historians: Homefront During WWII**, 10 a.m., History Center
- 14 Maud Hart Lovelace Young Adults Book Club**, 1 p.m., History Center, Must be pre-registered
- 20 Surrounded By History, Annual BECHS Fundraiser**, MSUM Ballroom, 6 p.m., Tickets on sale February 1, more information on page 5.



Surrounded By History

- 26 Tune in to KTOE 1420-AM** at 1 p.m. for BECHS update on Talk of the Town
- 26 Our History Matters: What Your Ancestor's Wore** by Grace Keir, Textile Historian, 6 p.m., History Center, \$5 Adults, Members Free



## APRIL

- 7 or 9 Annual Tour Guide Training**, 5 p.m., History Center, More information on page 14.
- 11 Young Historians: Technology Advances 1950s-Present**, 10 a.m., History Center, RSVP to 345-5566
- 11 Maud Hart Lovelace Young Adults Book Club**, 1 p.m., History Center, Must be pre-registered
- 13 Annual Volunteer Appreciation**, 5:30 p.m., History Center, watch for more information coming soon.
- 23 Tune in to KTOE 1420-AM** at 1 p.m. for BECHS update on Talk of the Town
- 23 Our History Matters**, TBA, 6 p.m., History Center, \$5 Adults, Members Free

### Three easy ways to stay up-to-date:

- Check out [www.bechshistory.com](http://www.bechshistory.com) for full event details and updates!
- Sign-up for our free monthly e-news to receive updates between *Historian* issues
- Follow BECHS on Facebook and Twitter.

### Electronic Version of *The Historian* Now Available

If you would like to receive *The Historian* via email rather than traditional mail, please contact Danelle at [bechsms@hickorytech.net](mailto:bechsms@hickorytech.net) or 345-5566.

### Answers to Blue Earth County Trivia on page 13:

1. 1951      2. The Wagon Wheel      3. 1905

# BECHS Annual Membership

The Blue Earth County Historical Society is a member supported non-profit organization. Membership dues make up a growing portion of the annual operating budget. Thank you for your support.

Name \_\_\_\_\_

Business Name \_\_\_\_\_

Address \_\_\_\_\_

Phone \_\_\_\_\_

Email \_\_\_\_\_

## **Membership Levels**

Individual Senior (62+) \$20

Individual \$25

Household \$35

Contributor \$50

Supporter\* \$100

Booster\* \$250

Advocate\* \$500

Benefactor\* \$1000

\*denotes Business Member levels

Please send this form and check to:

BECHS Membership

415 Cherry Street

Mankato, MN 56001

**OR**

Complete your membership form

online at [www.bechshistory.com](http://www.bechshistory.com)

*Affiliate Membership levels available for Groups or Organizations, call for details.*



## **Blue Earth County Historical Society**

415 Cherry Street

Mankato, MN 56001

ADDRESS SERVICE REQUESTED

### **Non-Profit Org.**

U.S. Postage

PAID

Mankato MN

56001

Permit No. 86

**Membership  
Expiration**

**Connecting Today to the Past Since 1901**